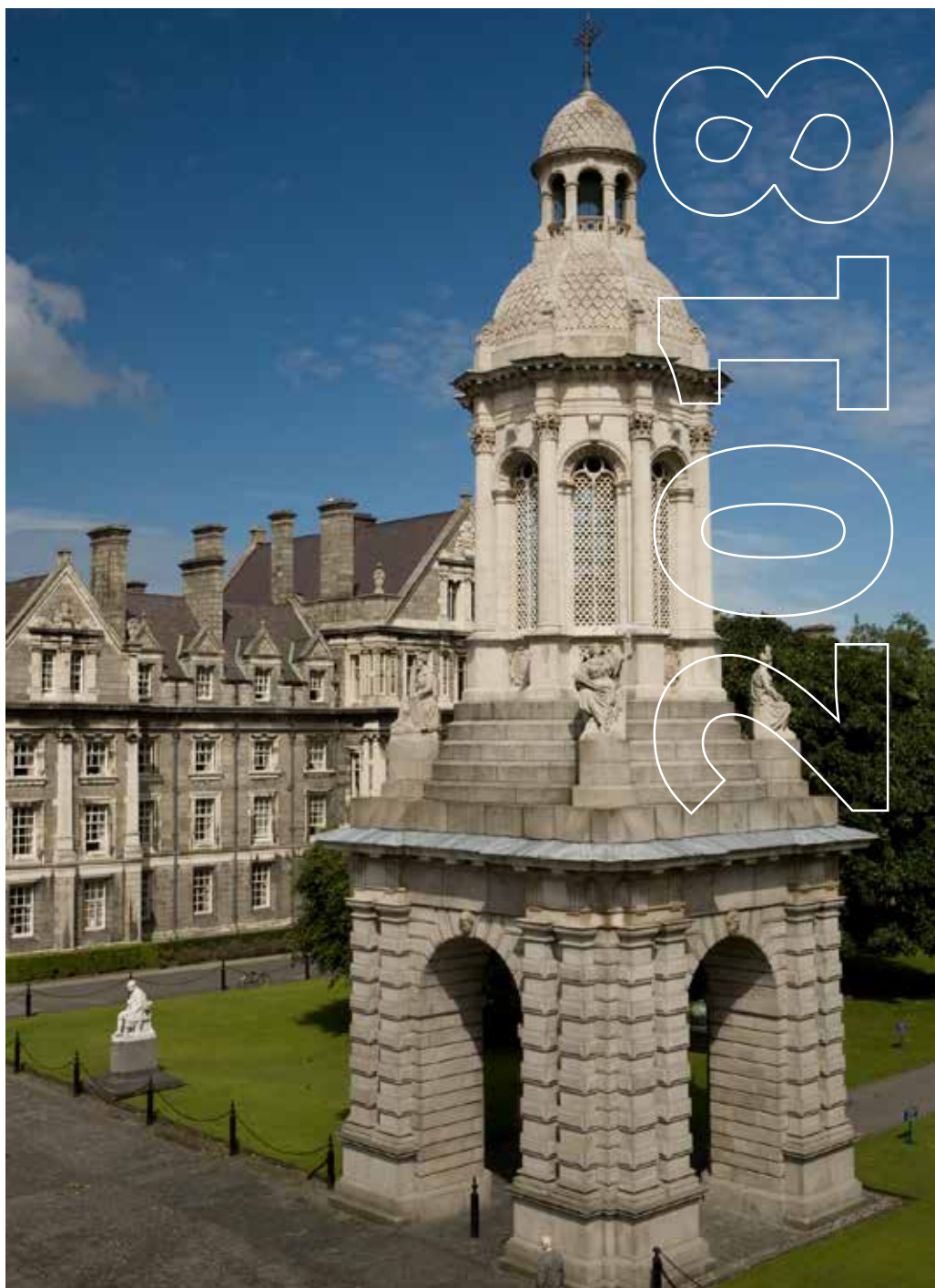




Trinity College Dublin
Coláiste na Tríonóide, Baile Átha Cliath
The University of Dublin

Postgraduate Prospectus



Welcome from the Dean of Graduate Studies



Trinity College Dublin, the University of Dublin is Ireland's leading university, steeped in history with a reputation for excellence in education, research and innovation.

The past year has been a significant one for Trinity. 2017 marked 425 years since the University was founded, and in January of last year Trinity joined the prestigious ranks of the League of European Research Universities (LERU). As the first and only university in Ireland to become a member of Europe's leading network of research-intensive universities, this represented a significant achievement.

Our research strengths span the Natural Sciences; Health sciences such as Medicine, Nursing, Pharmacy and Dentistry; Engineering, Computer Sciences and Mathematics; Business, Law, Psychology as well as other Arts, Humanities and Social Science subjects, a spectrum that is mirrored by our broad range of taught postgraduate courses and research opportunities at master's and doctorate level.

As a research-led university, our students are given the opportunity to work alongside inspiring professors – global leaders in their fields – in a common enterprise of discovery. The Trinity curriculum isn't just about imparting knowledge; it's aimed at developing the critical faculties of the mind, through freedom of expression, willingness to engage in debate, and original research.

Employers worldwide hold Trinity graduates in high esteem. The university has produced generations of outstanding graduates. Some of the most famous people in Irish history have been educated here: writers like Oscar Wilde and Samuel Beckett; scientists like William Rowan Hamilton and E.T.S. Walton, who won the Nobel Prize for splitting the atom; William Campbell, recently awarded the Nobel Prize in Medicine as well as two Irish presidents and many industry leaders and entrepreneurs. As a truly international university, we welcome applications from prospective postgraduate students anywhere in the world.

Trinity's commitment to online education is demonstrated through an increasing number of online postgraduate and continuing professional development (CPD) courses offered; these include the Postgraduate Diploma/MSc in Applied Social Studies, Postgraduate Certificate in Dementia, Postgraduate Certificate/Diploma in Advanced Radiotherapy Practice, MSc in Managing Risk and System Change, and Postgraduate Certificate in Clinical Exercise, all delivered online. Two new online CPD courses in Legal Training for Child Welfare Practitioners and Dysphagia have also been launched commencing in February 2017. These courses represent the first of many online postgraduate courses Trinity plans to offer over the coming years.

I hope you will consider Trinity as your university of choice for postgraduate study, for an exciting new journey that will open your mind to new experiences, ways of thinking and friendships, many of which will last for a lifetime. And I hope that this prospectus is a useful resource for you as you seek to find the perfect field of postgraduate study to meet your needs and aspirations.

I look forward to welcoming you, as a postgraduate student, to Trinity College Dublin, the University of Dublin.

Professor Neville Cox, Dean of Graduate Studies

Trinity College Dublin, the University of Dublin

Contents

The Trinity Education	4
Graduate Attributes	5
Why Choose Trinity?	8
What Our Students Say	10
Student Life at Trinity	11
Student Services	12
International Students	13
Postgraduate Research at Trinity	15
Postgraduate Study at Trinity	16
Fees	18
How to Apply	19
Contact Us	19
Postgraduate Research Programmes	21
Postgraduate Taught Programmes	33

The Trinity Education



Experience world class education



Trinity education fosters in our students a life-long desire for knowledge and understanding, a capacity for creativity and innovation, cross-cultural awareness and a sense of global citizenship.

- At Trinity, we provide a liberal environment where independence of thought is highly valued and where all are encouraged to achieve their full potential. We believe that creativity is born out of debate and questioning, and we encourage our students to question and challenge the status quo.
- As we have for generations, we will continue to educate our students to be leaders in intellectual, cultural, social, political and economic life. A Trinity Education extends beyond the classroom and embraces co- and extra-curricular activity within the Student Experience, facilitating student internships with multi-national industry partners.
- Trinity promotes diversity and inclusivity, creating a community based on collegiality and where everyone is encouraged to use their talents to realise their potential.

Be in a research-centred environment



At Trinity, you will be given the opportunity to work with and learn from global leaders in research, to benefit from their experience and networks.



- As the only Irish member of the prestigious League of 22 European Research Universities (LERU), Trinity is committed to providing excellence in education and research. We meet the highest standards in learning, innovation and independent critical enquiry, and we win more than 50% of the European Research funding coming into Ireland.
- Staff and students at Trinity conduct research at the frontiers of their disciplines, with exciting interaction between disciplines such as biology and engineering, business and social policy creating new ideas.

Build flexible career paths



In a world of new opportunities, today's graduates need to be adaptable, flexible and innovative.



- Trinity instils in its graduates the confidence and capability to nurture and build a career that may span fields and industries, or address industrial and societal challenges which may not yet exist.
- Trinity has produced generations of outstanding graduates who include Nobel-prize winning scientists, successful entrepreneurs, poets and playwrights. We are committed to a culture of career-readiness, providing an education that will equip you to develop valuable transferable skills.
- Trinity also encourages an entrepreneurial spirit, providing incubation programmes for student-led companies, and has been named as Europe's leading university two years in a row for producing venture-backed entrepreneurs.

GRADUATE ATTRIBUTES



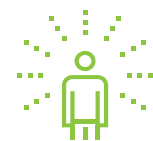
Think
Independently



Communicate
Effectively



Develop
Continuously



Act
Responsibly

Be part of a supportive community



Community is a key element in the Trinity education and every student can benefit from a wide variety of available supports.



- Trinity's sports clubs range from badminton and squash to hockey, rugby, rowing and sailing, GAA, swimming and Ultimate Frisbee. They cater for everyone from social members to Olympic athletes.
- Culture and the Arts are key to Trinity's heritage and are reflected in our student experience. A major highlight of every academic year is the world famous Trinity Ball – Europe's largest private party happens right on campus and plays host to some of the biggest names in world music.
- Student well-being is extremely important at Trinity and we offer dedicated personal support and well-being services. The Graduate Students' Union acts as a voice for the postgraduate student population.

Be at the centre of things



Dublin is a vibrant, multicultural, European capital and Trinity students take full advantage of everything the university and the city have to offer.



- The vibrant social scene in the city and on campus ensures that students enjoy a unique university experience. Trinity's historic campus is situated in the heart of Dublin city centre, with efficient transport links to our teaching hospitals at St James and Tallaght.
- Trinity's main campus of cobbled squares, historic buildings and green playing fields also includes state-of-the-art modern facilities for teaching and research and a sports centre with a climbing wall and swimming pool. The Trinity Library is one of the world's great research libraries. The Science Gallery is a vibrant, international award-winning forum for exploring science through art and public engagement, and some of the country's major research centres in fields such as the Arts and Humanities, Nanoscience and Biomedical Sciences sit side by side with our rich heritage.
- In recent years, Dublin has become a hub for some of the world's leading technology companies, housing the European headquarters of a number of the world's most prominent tech giants. This has led the Docklands area adjacent to Trinity's Enterprise Campus being labelled 'the Silicon Docks'.

Be a global citizen



As a global community, Trinity gives you the opportunity to gain a global perspective, working with people from all parts of the world to address challenges of global consequence.



At Trinity, you will have the opportunity to:

- Interact with students from around the globe. Trinity is home to students from every county in Ireland and more than 120 countries around the world.
- Become an activist in global issues, such as environmental sustainability.
- Engage with societal challenges that impact on global citizenship and society.
- We aim to secure the greatest benefit to the public good through our active participation in the social, economic and cultural life of Dublin, Ireland and the world. Our students are at the heart of that ambition.

Join Ireland's top University



Over the past 425 years, Trinity has developed a reputation as an institution that delivers world-class education, consistently ranking as Ireland's top university.



- Employers worldwide hold Trinity graduates in high esteem. Our current academic staff include world leaders in their fields.
- Some of the most famous people in Irish history have been educated at Trinity and we also celebrate the successes of our more recent graduates: Nobel Prize winners in literature, science and medicine; presidents and world leaders; award-winning actors and film makers; internationally renowned poets and playwrights, entrepreneurs and business leaders.

Why Choose Trinity?

University Rankings

Trinity College Dublin, the University of Dublin is Ireland's top ranked university, and the only Irish university in the world top 100 universities (QS World University Rankings 2017).

International Reputation for Research and Teaching Excellence

Trinity is Ireland's leading university, recognised internationally for excellence in education and research, and most importantly, our graduates are held in high esteem by employers worldwide. Trinity offers an exceptional educational experience centred on a research-inspired curriculum. As a community of staff and students, Trinity brings together world-class experts across all disciplines, and teaching and research become part of the same collaborative experience.

Location

Trinity is situated in the heart of Dublin's city centre, at the centre of the country's transport hub, in a beautiful campus which contains a wonderful mix of modern and historic facilities, including the country's largest research library.

International Reach

Trinity has students and staff from more than 120 different nationalities on campus, making it a truly diverse and international campus.

Student Supports

Supports including Graduate Students' Union, an excellent Careers Advisory Service to help you find employment and an Alumni Career Network to support you after graduation.

Student Life

Trinity offers students an unparalleled experience, with 120 societies and 48 sports clubs. Course specific social events are also arranged for you to get to know your new classmates.

Distinguished Alumni

Over the past four centuries Trinity graduates have played a leading role on the world stage; Nobel prize-winners and presidents of Ireland have attended Trinity or taught there. Physicist and Nobel Laureate Ernest Walton; Samuel Beckett, author of *Waiting for Godot*; Jonathan Swift, the creator of *Gulliver* and *Bram Stoker*, who wrote *Dracula*, all attended Trinity. In 2015, Trinity Graduate William Campbell received the Nobel Prize in Medicine.

Trinity continues to educate innovative thinkers with the independent and critical-thinking skills that are valued by employers. Graduates from Trinity have founded more venture-backed companies than graduates from any other European university over the past 10 years according to independent research from Pitchbook. Trinity was Europe's highest placed university in Pitchbook's Universities Report for in 2015 and 2016.

Trinity's Location

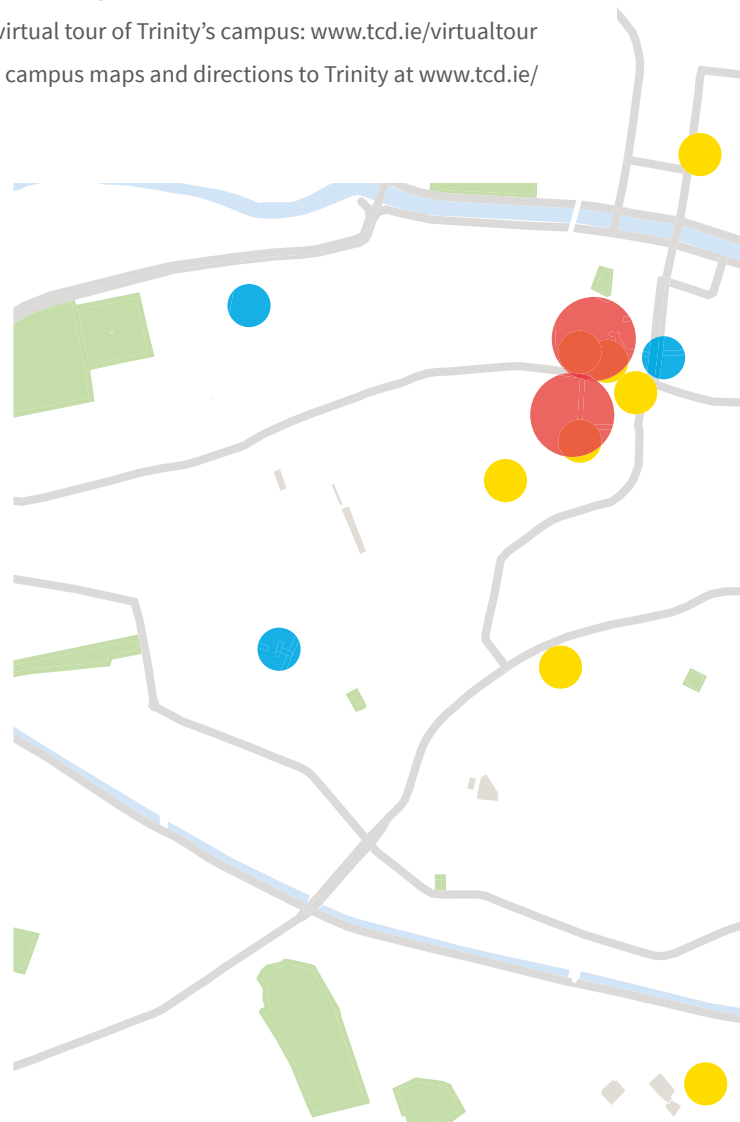
Established in 1592, Trinity College Dublin, the University of Dublin's historic campus is situated in the heart of Dublin city centre, Ireland. Trinity's 47-acre campus of cobbled squares, historic buildings and green playing fields houses extensive state-of-the-art modern facilities including the Sports Centre, Science Gallery, Nanoscience research centre, Long Room Hub, and the Biomedical Sciences Institute.

Trinity's central location makes it highly accessible for all forms of public transport, such as LUAS (light rail transit) lines, the DART line (Dublin's suburban rail system) and a large number of Dublin's bus routes. The national bus routes are a few minutes' walk away, Dublin's main two train stations are in close proximity, while Dublin airport is 13km (8 miles) from the campus and is directly accessible via bus or taxi.

Dublin has a well-deserved reputation as one of Europe's leading cities for tourism and entertainment. Many of its best cultural, historical and entertainment centres are within easy walking distance of Trinity. The vibrant social scene in the city and on campus ensures that students enjoy a wonderful social life while studying at Trinity.

Take a virtual tour of Trinity's campus: www.tcd.ie/virtualtour

Browse campus maps and directions to Trinity at www.tcd.ie/maps

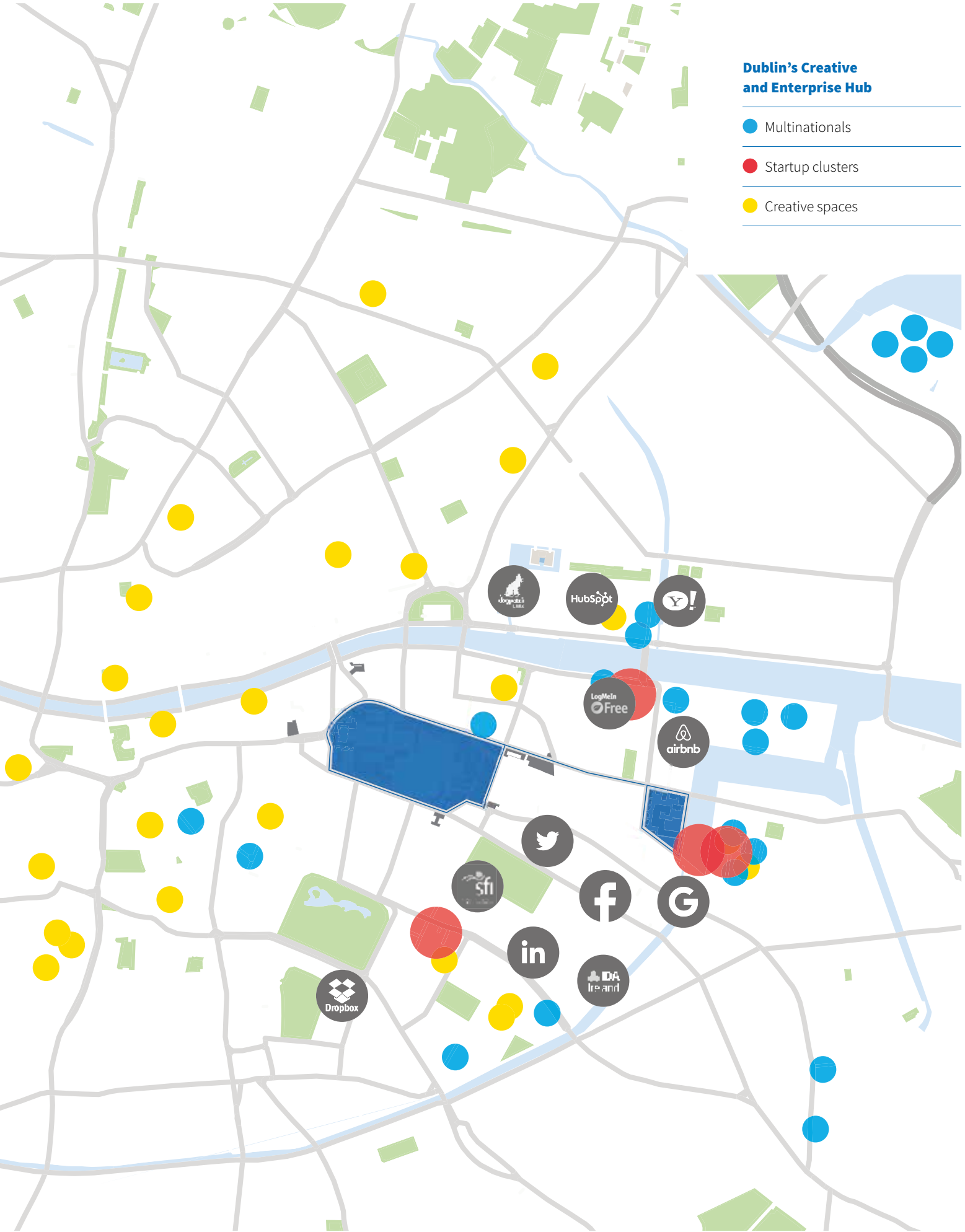


Dublin's Creative and Enterprise Hub

● Multinationals

● Startup clusters

● Creative spaces



What our students say



“Trinity is a world-class university with an international reputation. Computer science research at Trinity is world-leading, and benefits from Dublin being a technology hub in Europe (known as “The European Silicon Valley”). Research centres at Trinity have extensive collaborations with the world’s leading technology companies, allowing Trinity students to access the latest technology methods applied in practice. It also directly contributes to the ability of Trinity’s postgraduate students to develop their research findings into real-world products.”

Yu Xu, *PhD in Computer Science - China*

“Coming to Trinity College Dublin is one of the best things that has happened to me. The beauty of the campus is so inspiring and there is always something new to discover as one walks around it. I have been given all the conditions necessary to work on my research. The library resources are great, and the staff around the campus has always been helpful.”

Alejandra Nuñez Asomoza, *PhD student at the Centre for English Language Learning and Teaching, School of Linguistic, Speech and Communication Sciences - Mexico*



“My experience in Ireland has been absolutely incredible. I’ve been constantly amazed by the kindness, familial spirit, and camaraderie that I’ve encountered - meeting and learning from great mentors, working with great scholars here at Trinity, and growing a lot from each and every experience. It has been fascinating to learn more about the deep history and connections between the United States and Ireland. Programs like the Washington Ireland Program and the Mitchell Scholarship will hopefully continue to build a generation of young leaders that will invest in a fruitful relationship between the two countries.”

YRishi Ahuja, *George J. Mitchell Scholarship, Masters of Science in Economics - United States*

Student Life at Trinity

Student Societies

With 120 student societies today, student societies have been an essential part of life at Trinity since the 17th century. The Historical Society (the “Hist”) and the Philosophical Society (the “Phil”) date back to 1770 and 1684 respectively. www.trinitysocieties.ie

Sports Clubs

We have 48 sports clubs to choose from, ranging from badminton and squash to hockey, rugby, rowing and sailing. Individuals and adventure seekers will also find options in clubs such as climbing and potholing. Get more information at www.ducac.tcdlife.ie.

Sports Facilities

In addition to the rugby, soccer and cricket pitches on campus, there is the Sports Complex which contains a six lane swimming pool with sauna and steam rooms. The pool has a floating floor so the depth can be adjusted to cater for activities from beginners’ lessons to scuba training and water polo. Other facilities include three large sports halls, fitness and aerobic studios, reflexology and other holistic treatments. A striking element of the building is the spectacular climbing wall which is visible for almost the entire height of the Sports Complex. The University also hosts outdoor synthetic grass tennis courts, a rifle range, croquet lawn as well as further pitches and a boathouse off campus. www.tcd.ie/sport

Sports Scholarship/Bursary Programme

This scheme aims to support athletes with the highest sporting potential. Financial assistance, physiological and fitness assessment, and personal development can all be provided to qualifying students. www.tcd.ie/sport/scholarship

Theatres, Galleries and Museums

Theatres – Trinity contains four theatres, the Samuel Beckett Theatre, Players Theatre and two theatres in The Lir Academy. During term time the Samuel Beckett Theatre and The Lir’s theatres showcase the work of students taking drama and professional acting courses, such as Twelfth Night, Scenes from The Big Picture, Into the Woods, as well as performances directed and designed by some of Ireland’s leading theatre practitioners. The Samuel Beckett Theatre has hosted visits from some of the most prestigious dance and theatre companies from Ireland, Europe, Asia and the United States.

Science Gallery – Make sure to visit the free, cutting-edge exhibitions and events at Science Gallery on the Trinity campus. The antithesis of the dusty museum, Science Gallery is an ultra-modern, creative space where science and art collide, where white-hot scientific issues are thrashed out and you can have your say. Recent exhibitions include FAIL BETTER, which explored the truth in the old adage “if at first you don’t succeed,” and BLOOD, which investigated the captivating artistic and scientific qualities of the essential liquid.

Museums – Trinity’s Herbarium is the only plant taxonomic research centre in Ireland and one of the few in Europe. The Zoology museum’s 30,000 specimens include objects of historic interest such as Baltic glass models, 19th century entomological examples, the extinct Great Auk and a complete skeleton of the Great Irish Elk. The Geology Museum, built in the 19th century, contains 50,000 paleontological specimens, 7,000 mineralogical and 15,000 petrological specimens. The Weingreen Museum houses exhibits dating from 9,000 BC to the crusades in the 13th century AD. The exhibits in the Museum of Biblical Antiquities encompass the entire Mediterranean world from North Africa to the cradle of civilisation in Mesopotamia.

Restaurants and Coffee Shops

Students can choose from a wide range of restaurants and coffee shops to suit all tastes and budgets, including:

- The modern Buttery Food Court with a hot food counter, deli counter, and gourmet coffee shop.
- The Old Dining Hall, where lunch is enjoyed in traditional splendour.
- Gastro Deli: Located in the Hamilton building concourse, it includes a Costa Cafe and a Gastro Deli with delicious made to order sandwiches, panini and wraps and a range of pastries, confectionery and snacks.
- The Perch: Located in the Arts Building adjacent to the Book of Kells exhibition and the Old Library, offering a range of hot and cold beverages, mouth-watering pastries and sandwiches and grab and go food offers. .
- Coffee shops serving Lavazza coffee in Áras an Phiarsaigh and the School of Nursing and Midwifery.
- In addition, Dublin city’s wide selection of restaurants, cafés, delis and coffee shops are within a few minutes’ walk away.

Accommodation

A limited number of students may be housed in University accommodation, including residences on-campus, at Trinity Hall in Dartry or in rooms managed by nearby colleges. Find out more at www.tcd.ie/accommodation.

Most postgraduate students find accommodation in shared houses or self-catering apartments. Houses and apartments vary in price, depending on size, facilities and location. The best place to look for a place to rent is via the Accommodation Advisory Service at accommodation.tcdsu.org or www.tcdgsu.ie/ accommodation.

If you are not offered accommodation by Trinity, or would prefer to live elsewhere, temporary housing of up to a maximum of two weeks can be arranged on the main campus in September, to allow time to search for long-term accommodation. This offer is only available to overseas students. Other universities in Dublin may begin term earlier than Trinity and as a result, if you are seeking accommodation, the earlier you are able to secure accommodation, the more choice you will get in each location and price range.

Student Services

Academic Registry

Academic Registry provides central academic administrative services to assist students with all queries regarding course applications/admission, fees, registration, timetables, examinations and assessments as well as graduation queries. From your initial enquiry to Trinity through to your graduation ceremony, the Academic Registry Service Desk Team will be available to address your queries which can be logged via the homepage of my.tcd.ie clicking on the ASK TCD button and selecting the appropriate enquiry category, by emailing us at academic.registry@tcd.ie, or calling us on +353 (0)1 896 4500.

Careers Advisory Service

The service is there to answer the big question, 'What next?' Plan your future beyond your current course of study with the help of guidance software, skills workshops and personal consultations.

Employment opportunities and information on a wide variety of occupations and employers are available in a specialised library which also contains free directories and guides. www.tcd.ie/careers

Chaplaincy

The chaplains ensure hospitality to all students, irrespective of religious affiliation. The chaplains also gather students and staff for prayer and worship, both ecumenically and according to their respective traditions, and organise various spiritual seminars and religious retreats. www.tcd.ie/chaplaincy

College Health Service

The College Health Service provides GP services for students. Student consultations are free of charge with modest fees for additional services. All EU students should bring with them a European Health Insurance Card issued in their country of origin – this will entitle them to free prescriptions. Non-EU students are not entitled to free national health services in Ireland, and are advised to take out insurance cover for hospitalisation or to extend private health insurance before leaving their home country. Private health insurance cover is also available in Ireland and the student health service can advise you on your options. www.tcd.ie/collegehealth

Day Nursery

The day nursery is open 8am–6pm during the academic term, and 8am–5.15pm outside of academic term. It caters for children aged three months to four and a half years old. There is a fee for this service. There is also a self-supporting student- parent discussion group. This informal group is open to any student who already is, or is about to become, a parent. www.tcd.ie/info/services/daynursery

Disability Service

Trinity is committed to a policy of equal opportunity in education and to ensuring that students with disability have as complete and equitable access to all facets of life at Trinity as can reasonably be provided. The Student Disability Service works closely with academic staff, tutors, administrators and other support services to meet the support requirements of students with any disability. www.tcd.ie/disability

Graduate Students' Union

The Graduate Students' Union serves to protect students' interests and acts as a helpful meeting point. The Union organises a variety of events, receptions and trips each year where postgraduate students can meet to share ideas in a relaxed environment and become more closely involved in life at Trinity. tcdgsu.ie

Postgraduate Advisory Service

The Postgraduate Advisory Service is a unique and confidential service available to all registered postgraduate students. It offers a comprehensive range of academic, pastoral, and professional supports dedicated to enhancing your student experience. If you require specific advice, or would like to arrange a confidential meeting with the dedicated Student Support Officer, you can make an appointment by phoning +353 1 896 1417, or by e-mail pgsupp@tcd.ie. www.tcd.ie/Senior_Tutor/postgraduateadvisory.

Student Counselling Service

At times of stress or difficulty, whether of an academic or personal nature, Student Counselling is there to help. The service is confidential, professional and free of charge. A learning support psychologist is available to discuss examinations, issues around concentration and study methods. There is also a Peer Support Network which is confidential and based on student-to-student support. www.tcd.ie/student_counselling

Learning Supports

Library

Trinity's library is the largest research library in Ireland. The collections include six million printed volumes, nearly 500,000 electronic books, 80,000 electronic journals, the country's largest collection of maps and printed music, and an extensive collection of manuscripts, and they are all available to every student. The library is not just one building but several, across the campus and in our teaching hospitals.

There are group study rooms, a multimedia resource area, assistive technology suites, Wi-Fi, and staff to help on a one-to-one basis, and by group tours and demonstrations. All the electronic collections are available to students on the internet and books can be reserved, renewed and requested online.

Thousands of visitors come each year to see the Book of Kells and exhibitions in the Long Room, which is one of the most famous library spaces in the world. Admission is free for Trinity students. Find out more about the Library at www.tcd.ie/library.

IT Services for Students

As a student at Trinity, you are provided with a wide range of computer facilities and services, including:

- — Access to hundreds of computers located in over 20 student computer rooms, many of which are open 24 hours a day, seven days a week
- — Fast, secure Wi-Fi across Trinity for your computer, phone or tablet
- — A Trinity Gmail account, which is yours for life
- — E-learning resources for many courses, available in the Blackboard Learn system
- — Access to IT support from the IT Services Helpdesk on campus and via e-mail and phone

Find out more at www.tcd.ie/itservices/students

International Students

Trinity College Dublin, the University of Dublin is an international university attracting faculty, students and staff from every continent. Trinity students receive outstanding academic and personal support throughout their time here. Trinity aims to ensure all our students have a positive experience as we educate them to be global citizens and we are proud that postgraduate students continue to come here in significant numbers from around the world. See further information at www.tcd.ie/study.

Employment

Students from countries within the European Union (EU) are free to take up employment under standard EU free movement of labour regulations. However, mixing employment with study is not easy, and it is recommended that students do not arrive from elsewhere in the EU without possessing the financial resources to complete their chosen course of study.

Non-EU nationals who have permission to undertake postgraduate study in Ireland are entitled to take up casual employment, defined as up to 20 hours part-time work per week or full-time work during vacation periods. Furthermore, in order to encourage talented, skilled graduates to pursue careers in Ireland, non-EU nationals are permitted to remain in Ireland for an additional period of 12 months after receipt of results of their final examinations.

During that period, students are able to seek employment and apply for a Green Card or Work Permit, as appropriate. For further information please check the Department of Jobs, Enterprise and Innovation website: www.enterprise.gov.ie

The Work in Ireland Programme (USIT) provides a special work permit for students on the programme, see www.usit.ie. Canadian students are provided with a 12-month permit from Travelcuts in Canada, see www.swap.ca. US students can get a four-month permit from Council Exchanges, see www.ciee.org. The Programme is also available to students from Jamaica, Ghana, Argentina and South Africa. To be eligible, you need to be a full-time student at a third level institution or within six months of graduation. There are a limited number of places available so early application is advisable.

Language Requirements

Students whose first language is not English must provide evidence of competency in this language through one of the well-established international standard tests:

Examinations	Minimum Level Required
IELTS	Grade 6.5
TOEFL	230 – computer based
	570 – paper based
	88 – internet based
Cambridge Certificate	Grade C of Advanced English
Cambridge Certificate	Grade C of Proficiency in English
Pearson Vue English Language Test	Minimum score of 63 to be eligible (with no section score below 59)

Please note that these are the only forms of English Language Certification that we accept.

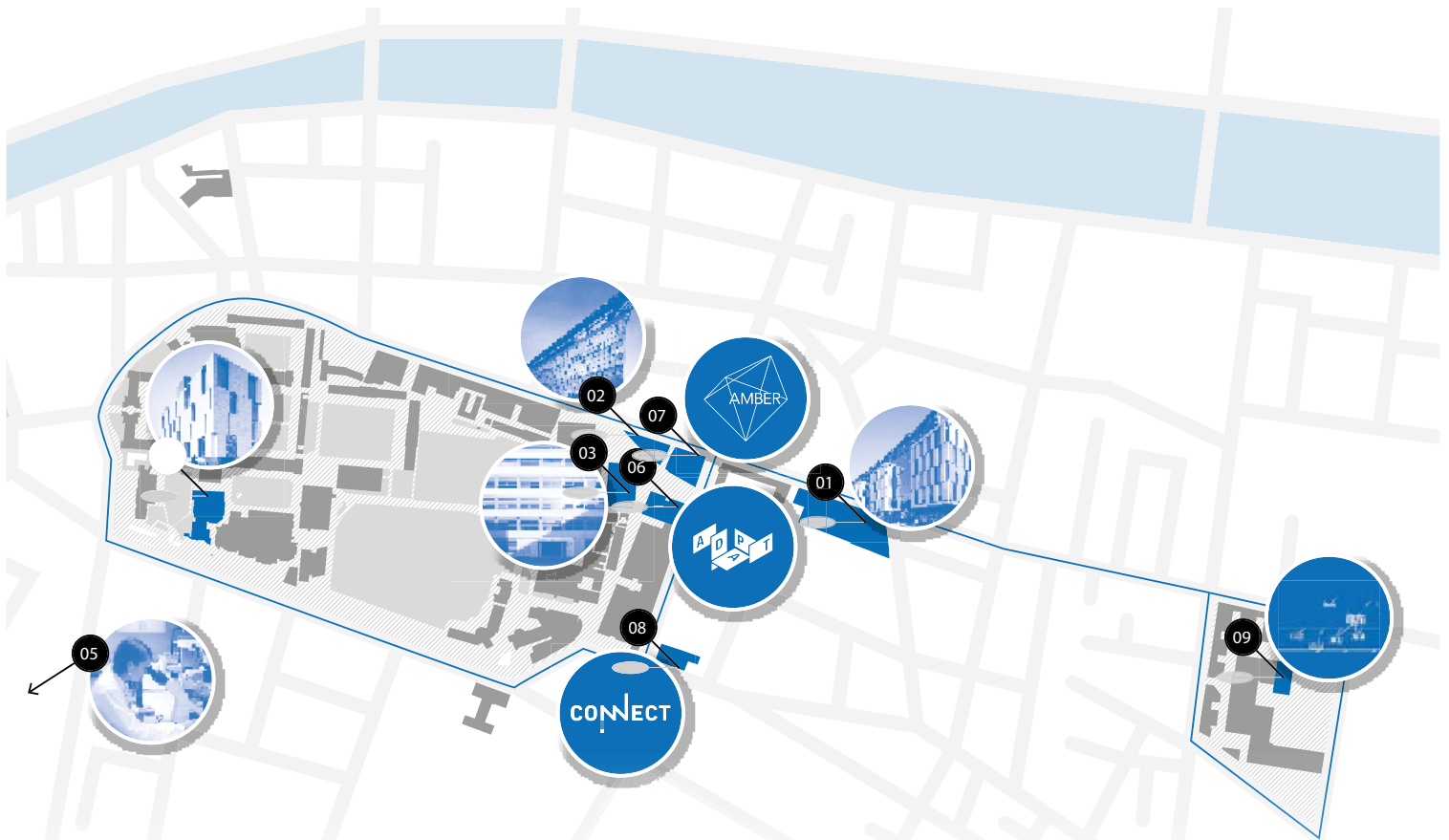
Visa Requirements

If you are a citizen of the European Union (EU), you do not need a visa to enter and live in Ireland. Some, but not all non-EU students require visas to enter Ireland, students from North America are among those who do not require a visa. The list of visa-required countries can be found at the INIS website: www.inis.gov.ie. It is important to note that ALL non-EU students, whether visa-required or not, must register with the GNIB for permission to remain in the state. Students must show their offer letter at airport immigration where they will receive a temporary stamp in their passport. They must register with the GNIB within the time limit specified on their temporary stamp.

Visa-required non-EU students should contact their nearest Irish Embassy or Consulate for information on visa requirements. Visas can take up to 8-10 weeks to process, so please allow sufficient time.

You should apply as early as possible, especially if an Irish visa is required. The Academic Registry does not assist in the processing of visa applications.

All non-EU fee paying students must pay their full tuition fees prior to registration.



- 01. Trinity Biomedical Sciences Institute (TBSI)
- 02. Centre for Research on Adaptive Nanostructures and Nanodevices (CRANN)
- 03. Trinity College Institute of Neuroscience
- 04. Trinity Long Room Hub Arts and Humanities Research Institute
- 05. The Trinity Translational Medicine Institute (TTMI)

- 06. Centre for Global Intelligent Content (ADAPT)
- 07. Advanced Materials and BioEngineering Research (AMBER)
- 08. Centre for Telecommunications and Value Chain Research (CONNECT)
- 09. Learnovate Centre



Postgraduate Research at Trinity

Trinity College Dublin, the University of Dublin is recognised as one of the world's leading research-intensive universities and its research continues to address issues of global societal and economic importance. The University's research strategy, based on developing multidisciplinary areas in Trinity, has the critical mass of world-class researchers needed to deliver research of global consequence.

Among the priority research themes being addressed by Trinity researchers are ageing, nanoscience and materials, telecommunications, neuroscience, human identity, cancer, international integration, arts practice, and the inclusive society. These are topics that not only address issues of immediate and long-term concern to society but offer opportunities for future economic development. The University's commitment to a research-led education means that our students are exposed to leaders in their discipline, to the latest knowledge and ideas, and to an education that emphasises analytical skills and creative thinking, and gives students an opportunity to develop a broad range of skills by engaging in personal research.

Research is central to the generation of the new disruptive ideas that will underpin future sustainable businesses. The knowledge created by Trinity is critical for the economic development of Ireland as it is for the education on offer to our students.

Trinity's research themes are supported by a set of research institutes that provide the infrastructure needed to support multi-disciplinary research as well as engagement with enterprise and social partners working in partnership with Trinity's twenty-four schools.

Research Institutes and Centres

Trinity has five research institutes. These include:

- Trinity Biomedical Sciences Institute (TBSI)
www.tcd.ie/biosciences/
- Centre for Research on Adaptive Nanostructures and Nanodevices (CRANN)
www.crann.tcd.ie
- Institute for International Integration Studies (IIIS)
www.tcd.ie/iiis
- Trinity Long Room Hub (TLRH)
www.tcd.ie/longroomhub
- Trinity College Institute of Neuroscience (TCIN)
www.neuroscience.tcd.ie

Further information is available at: www.tcd.ie/research. Other research entities include:

- Trinity Centre for Bioengineering
www.tcd.ie/bioengineering
- Trinity Translational Medicine Institute
www.tcd.ie/ttmi
- Centre for Global Health
www.global-health.tcd.ie
- Centre for Medieval and Renaissance Studies
www.tcd.ie/medieval_renaissance
- Centre for Transport Research and Innovation for People (TRIP) www.tcd.ie/transport-research
- Children's Research Centre
www.tcd.ie/childrensresearchcentre
- Oscar Wilde Centre
www.tcd.ie/owc
- Trinity Irish Art Research Centre (TRIARC)
www.tcd.ie/history_of_art/research/centres/triarc

Postgraduate Research Students

Higher degrees by research are normally obtained by carrying out a period of research within the University, under the supervision of a member of Trinity staff, with subsequent submission of a thesis. All doctoral students are registered on a structured Ph.D. and will attend modules, workshops and/or master classes as advised by their supervisor or supervisory panel normally in the first year to eighteen months of registration.

Students' progress is assessed regularly and is judged as satisfactory in a number of different ways in different research areas. Students are advised to find out about the system in place in their area well in advance of registration for their degree.

All students undertaking a research degree are assigned to a single supervisor, though for some students there may also be an additional advisor. The supervisor's role is essentially that of an academic guide and mentor, and students should make suitable arrangements to contact their supervisor as often as is practical and agreeable to both parties.

Applications are submitted online at www.tcd.ie/courses/postgraduate/research/az.php and must include a detailed research proposal. This is reviewed by the relevant School and acceptance is dependent on the quality of the proposal and availability of adequate supervision. The Dean of Graduate Studies then conducts the final review and approval subsequent to meeting all criteria.

Postgraduate Study at Trinity

Funding Opportunities for Research Students

The University offers two types of postgraduate awards which are available only to students intending to register for higher research degrees full-time (i.e. Ph.D.). Ussher Awards are open to applicants from all countries. These prestigious awards are few in number, very competitive, provide significant maintenance and fully cover fees. Postgraduate Studentships, also open to applicants from all countries, are more numerous but equally competitive. They provide a maintenance contribution and full fee coverage.

New entrants to the research register may indicate their application for these awards when applying online. Continuing students may now apply for the Postgraduate Studentship Award. These students should contact their School directly. Please note that only full-time research students are eligible for these awards. All awards are subject to an annual income limit of €18,000 gross, inclusive of the award maintenance, after payment of fees.

Furthermore, throughout the year all Schools offer a number of additional studentships to graduates interested in engaging in research. These are ordinarily advertised on the following websites:

- Research Office website www.tcd.ie/research_innovation/research (local access only)
- Vacancies website www.tcd.ie/vacancies
- Respective School website www.tcd.ie/structure

Postgraduate Students Undertaking Taught Courses

Postgraduate students on taught programmes normally have to pass a series of examinations and/or assessments in order to make satisfactory progress. Taught courses are available at four levels – Postgraduate Certificate, Diploma, Masters and Practitioner Doctorate. Individual taught courses are described under the appropriate faculty/school in this brochure and additional up to date information is available on the course pages at www.tcd.ie/courses/postgraduate/az

Postgraduate Students Not Reading for a Higher Degree

It is possible to register as a one-year or one-semester postgraduate student not reading for a degree. Students of this status are offered access to on campus facilities and are free to continue their own research, and/or to read courses of interest to them.

Directors of Teaching and Learning (Postgraduate)

There are Directors of Postgraduate Study in each of the Schools who are members of the Graduate Studies Committee. Directors of Teaching and Learning (Postgraduate) in each School are responsible for ensuring that any problems postgraduate students face are attended to.

University Course Regulations

On registration, students are given the University regulations (Calendar Part III), which govern academic progress through the University. In addition, students who undertake a postgraduate taught course will be given a course handbook, which details the specific requirements and regulations governing that course. Students are obliged to familiarise themselves with these regulations.

Teaching Terms

Term dates are available at www.tcd.ie/calendar.

Registration

Registration normally takes place in September as the majority of taught postgraduate courses commence in September of each year. Registration information for new entrants is available online at www.tcd.ie/orientation and all students (new entrants and continuing) must register online annually. Research students may register either in September or in March.

Postgraduate Orientation Day

During registration week, a number of formal and informal events are held to introduce newly enrolled students to life at Trinity; these include postgraduate orientation sessions. Up-to-date information on all orientation activities is available at www.tcd.ie/orientation.

Graduation

Postgraduate degrees, diplomas and certificates are awarded at one of a number of ceremonies throughout the year. Information on these on campus ceremonies is sent to all registered postgraduate students as appropriate.





Fees

An online application fee of €55 per course applied for is required for all taught and research courses.

Fee details for all courses are available at: www.tcd.ie/academicregistry/fees-payments. European Union (EU) and non-EU fees apply as appropriate.

An EU passport or citizenship, including an Irish passport or Irish citizenship, does not grant automatic entitlement to EU fees. An EU application is one made by a person who fulfils one or more of the following criteria:

1. who is ordinarily resident in the EU and who has received full-time further or higher education in the EU for three of the five years immediately preceding admission; or
2. who is ordinarily resident in the EU and has worked full-time in the EU for three of the five years immediately preceding admission; or
3. who holds a passport from an EU state and has received full-time further or higher education in the EU for three of the five years immediately preceding admission.

All other applications are considered to be non-EU applications.

Please note:

- Students who have had periods of residence outside the EU are required to provide documentary evidence to support their claim for EU fee status. This evidence must be presented with the application.
- Your status may not be changed during your programme once you are registered as an EU or non-EU fee paying student.
- EU degree students who are liable for the full annual tuition fee may take the option of paying their annual tuition fees in two instalments. Students classified as non-EU fee paying must pay the full fee before registration. Payment of fees is made online.
- The online application fee is non-refundable.
- Registration can take place only when the required fees have been paid.

Fieldwork Costs, Costs of Preparations of Thesis / Dissertation

Students are personally responsible for the costs involved if they have to undertake fieldwork as part of their postgraduate programme. They are also responsible for all costs relating to preparation and submission of their thesis or dissertation such as typing, binding and photography.

How to Apply

Entry to Irish universities is competitive, and no graduate applicant, from Ireland or any other country has an automatic right to admission. Most courses at Trinity have a restricted number of places available for postgraduate students. The range of studies on offer is vast and the standard set for postgraduate study is exceptionally high. This combination, together with the range of ancillary facilities in the immediate vicinity of the University, offers an almost unparalleled learning experience to all postgraduates.

Online applications

All course information and online application details are available at www.tcd.ie/courses/postgraduate/az. All applications for postgraduate research and taught programmes should be made online by logging on to my.tcd.ie.

Throughout the application and admission process, communications between Trinity and the applicant will primarily be via online messaging within the my.tcd.ie portal, and via email.

Please note that incomplete applications cannot be processed. You should also note that unsuccessful applications will not be returned.

Applicants should make all reasonable effort prior to registration to ensure that the course/programme they are registering for meets their expectations, by:

- contacting the relevant course co-ordinator or prospective supervisor/research director
- accessing all information available on the courses website www.tcd.ie/courses/postgraduate/az and the specific school/course web pages linked on this site.

The information set on these pages is intended as a guide only and shall not be deemed to form a contract between Trinity College Dublin, the University of Dublin and an applicant or any third party.

Contact Us

Academic Registry provides central academic administrative services to assist students with all queries including course applications/admission, fees, registration, and timetables.

Academic Registry

From your initial enquiry to Trinity through to your graduation ceremony, the Academic Registry Service Desk Team will be available to address your queries which can be logged via the home page of my.tcd.ie clicking on the ASK AR button and selecting the appropriate enquiry category, by emailing us at academic.registry@tcd.ie, or calling us on +353 1 896.4500.

Office of the Dean of Graduate Studies

Trinity College Dublin, the University of Dublin College Green, Dublin 2, Ireland

T +353 (0)1 896 2722 / 3671

E genadgso@tcd.ie www.tcd.ie/graduate_studies



Postgraduate Research Programmes

School	Research Degree Programme	Available Research Programmes
Faculty of Arts, Humanities and Social Sciences		Visit www.tcd.ie/courses/postgraduate/research/az.php

School of Business

Trinity Business School offers outstanding students the opportunity to pursue advanced research, leading to the award of an M.Litt., M.Sc., or Ph.D. degree. The Doctoral Degree Programme at Trinity Business School is focused on educating and training postgraduate students for careers in business research and in international business schools.

Currently, there are 55 students enrolled on the Research Degree Programme. The School attracts students with diverse backgrounds from around the world including some who have completed a master's degree in business or management, those who have gained practical experience at a managerial level since completion of an undergraduate degree, and those who work as researchers and lecturers in a university setting.

Find out more at www.tcd.ie/courses/postgraduate/research/az.php

September 2018 Entry

- Doctor in Philosophy, Business (Part-Time)
- Doctor in Philosophy, Business (Full-Time)
- Master in Letters in School of Business (Part-Time)
- Master in Letters in School of Business (Full-Time)
- Master in Science in School of Business (Part-Time)
- Master in Science in School of Business (Full-Time)

School of Creative Arts

The School's research outputs are consistent with the highest research activities internationally. More than twenty-five monographs or edited collections by staff have been published by leading academic presses in the past two years. The School's research activities are guided by three core objectives: Ireland & the Arts, Globalisation & the Arts, and Technology & the Arts.

All research students of the School are required to take core classes in Research Methodologies in their first year and to attend the Graduate seminars run by the Schools. The School is committed to training research students for the academic profession. Recent graduates hold permanent lectureships at universities in Ireland, UK, USA, Canada & Brazil. It has a very vibrant international research community and hosts scholars from all over the world in its symposia and conferences, and maintains very active links with the arts professions.

Find out more at www.tcd.ie/courses/postgraduate/research/az.php

September 2018 Entry

- Doctor in Philosophy, Drama (Part-Time)
- Doctor in Philosophy, Drama (Full-Time)
- Doctor in Philosophy, Music (Part-Time)
- Doctor in Philosophy, Music (Full-Time)
- Master in Letters, Drama (Part-Time)
- Master in Letters, Drama (Full-Time)
- Master in Letters, Music (Part-Time)
- Master in Letters, Music (Full-Time)

School	Research Degree Programme	Available Research Programmes
Faculty of Arts, Humanities and Social Sciences		Visit www.tcd.ie/courses/postgraduate/research/az.php
School of English	<p>With three well-established taught postgraduate courses and over 60 research students, the School of English has a vibrant research culture, with opportunities in a wide range of subjects and areas. We especially welcome applications in: medieval and renaissance literature, eighteenth-century literature, Anglo-Irish literature and drama, American literature, popular literature, creative writing, Victorian literature, postcolonial literature, Old English, and children's literature. Research opportunities in all areas are considerably enhanced by Trinity Library. As well being a copyright library, it holds manuscripts and special collections that can form the basis of research projects, particularly in the early period, in Anglo-Irish literature and in children's literature.</p> <p>Find out more at www.tcd.ie/courses/postgraduate/research/az.php</p>	<p>September 2018 Entry</p> <ul style="list-style-type: none"> Doctor in Philosophy, English (Part-Time) Doctor in Philosophy, English (Full-Time) Master in Letters in School of English (Part-Time) Master in Letters in School of English (Full-Time)

School of Histories and Humanities

The School offers research supervision across all of its disciplines within the context of its structured Doctoral (Ph.D., 3-4 years) and Research Master's courses (M.Litt., 2 years), including a wide variety of postgraduate training modules, career development options and teaching opportunities for senior postgraduates. Many of our students are successful in securing grants for their studies from College sources or external funders such as the Irish Research Council.

Find out more at www.tcd.ie/courses/postgraduate/research/az.php

September 2018 Entry

- Doctor in Philosophy, Classics (Part-Time)
- Doctor in Philosophy, Classics (Full-Time)
- Doctor in Philosophy, Centre for Gender and Women's Studies (Part-Time)
- Doctor in Philosophy, Centre for Gender and Women's Studies (Full-Time)
- Doctor in Philosophy, History of Art (Part-Time)
- Doctor in Philosophy, History of Art (Full-Time)
- Doctor in Philosophy, History (Part-Time)
- Doctor in Philosophy, History (Full-Time)
- Master in Letters, Classics (Part-Time)
- Master in Letters, Classics (Full-Time)
- Master in Letters, Centre for Gender and Women's Studies (Part-Time)
- Master in Letters, Centre for Gender and Women's Studies (Full-Time)
- Master in Letters, History of Art (Part-Time)
- Master in Letters, History of Art (Full-Time)
- Master in Letters, History (Part-Time)
- Master in Letters, History (Full-Time)

School	Research Degree Programme	Available Research Programmes
Faculty of Arts, Humanities and Social Sciences Visit www.tcd.ie/courses/postgraduate/research/az.php		
<p data-bbox="97 253 400 409">School of Languages, Literatures and Cultural Studies</p>	<p data-bbox="400 253 940 589">The School's research in literary, language and cultural studies ranges from the medieval to the very contemporary. Well-qualified research students are welcomed in all Schools within the School; enquiries for M.Litt. or Ph.D. research should be made in the first instance to the School or Centre concerned. In addition, a cluster of innovative taught postgraduate degrees offers a broad range of possibilities, leading to research or to professional practice in areas of language, literature and cultural life.</p> <p data-bbox="400 611 940 667">Find out more at www.tcd.ie/courses/postgraduate/research/az.php</p>	<p data-bbox="940 253 1495 297">September 2018 Entry</p> <ul style="list-style-type: none"> <li data-bbox="940 309 1495 342">Doctor in Philosophy, French (Part-Time) <li data-bbox="940 353 1495 387">Doctor in Philosophy, French (Full-Time) <li data-bbox="940 398 1495 432">Doctor in Philosophy, Germanic Studies (Part-Time) <li data-bbox="940 443 1495 477">Doctor in Philosophy, Germanic Studies (Full-Time) <li data-bbox="940 488 1495 544">Doctor in Philosophy, Irish and Celtic Studies (Part-Time) <li data-bbox="940 555 1495 611">Doctor in Philosophy, Irish and Celtic Studies (Full-Time) <li data-bbox="940 622 1495 656">Doctor in Philosophy, Italian (Part-Time) <li data-bbox="940 667 1495 701">Doctor in Philosophy, Italian (Full-Time) <li data-bbox="940 712 1495 768">Doctor in Philosophy in Near and Middle Eastern Studies (Part-Time) <li data-bbox="940 779 1495 835">Doctor in Philosophy in Near and Middle Eastern Studies (Full-Time) <li data-bbox="940 846 1495 902">Doctor in Philosophy, Russian and Slavonic Studies (Part-Time) <li data-bbox="940 913 1495 969">Doctor in Philosophy, Russian and Slavonic Studies (Full-Time) <li data-bbox="940 981 1495 1014">Doctor in Philosophy, Hispanic Studies (Part-Time) <li data-bbox="940 1025 1495 1059">Doctor in Philosophy, Hispanic Studies (Full-Time) <li data-bbox="940 1070 1495 1104">Master in Letters, French (Part-Time) <li data-bbox="940 1115 1495 1149">Master in Letters, French (Full-Time) <li data-bbox="940 1160 1495 1193">Master in Letters, Germanic Studies (Part-Time) <li data-bbox="940 1205 1495 1238">Master in Letters, Germanic Studies (Full-Time) <li data-bbox="940 1249 1495 1283">Master in Letters, Irish and Celtic Studies (Part-Time) <li data-bbox="940 1294 1495 1328">Master in Letters, Irish and Celtic Studies (Full-Time) <li data-bbox="940 1339 1495 1373">Master in Letters, Italian (Part-Time) <li data-bbox="940 1384 1495 1417">Master in Letters, Italian (Full-Time) <li data-bbox="940 1429 1495 1485">Master in Letters in Near and Middle Eastern Studies (Full-Time) <li data-bbox="940 1496 1495 1552">Master in Letters in Near and Middle Eastern Studies (Part-Time) <li data-bbox="940 1563 1495 1619">Master in Letters, Russian and Slavonic Studies (Part-Time) <li data-bbox="940 1630 1495 1686">Master in Letters, Russian and Slavonic Studies (Full-Time) <li data-bbox="940 1697 1495 1731">Master in Letters, Hispanic Studies (Part-Time) <li data-bbox="940 1742 1495 1776">Master in Letters, Hispanic Studies (Full-Time)

School	Research Degree Programme	Available Research Programmes
--------	---------------------------	-------------------------------

Faculty of Arts, Humanities and Social Sciences Visit www.tcd.ie/courses/postgraduate/research/az.php

School of Law

The Law School offers two postgraduate research degrees, the Master in Letters (M. Litt.) and the Doctor in Philosophy (Ph.D). It has a vibrant population of postgraduate research students and currently has around 70 students registered for M.Litt./Ph.D. degrees who are engaged in research across a wide range of law subjects. Each student is guided in his or her research by an academic supervisor who has expertise in the relevant research area. A central dedicated shared workspace is exclusively available for a limited full-time postgraduate research students which is adjoined by a seminar room.

Find out more at www.tcd.ie/courses/postgraduate/research/az.php

September 2018 Entry

- Doctor in Philosophy, Law (Part-Time)
- Doctor in Philosophy, Law (Full-Time)
- Master in Letters in School of Law (Part-Time)
- Master in Letters in School of Law (Full-Time)

School of Linguistic, Speech and Communications Sciences

The School of Linguistic, Speech and Communication Sciences offers six taught Masters programmes and a comprehensive range of doctoral research opportunities in the study of general and applied linguistics, speech sciences, speech and language pathology, clinical linguistics, Deaf Studies and Asian Studies.

Find out more at www.tcd.ie/courses/postgraduate/research/az.php

September 2018 Entry

- Doctor in Philosophy, Clinical Speech and Language Studies (Part-Time)
- Doctor in Philosophy, Clinical Speech and Language Studies (Full-Time)
- Doctor in Philosophy, Centre for Language and Communication Studies (Part-Time)
- Doctor in Philosophy, Centre for Language and Communication Studies (Full-Time)
- Master in Letters, Clinical Speech and Language Studies (Part-Time)
- Master in Letters, Clinical Speech and Language Studies (Full-Time)
- Master in Science in Clinical Speech and Language Studies (Full-Time)
- Master in Science in Clinical Speech and Language Studies (Part-Time)
- Master in Science in Centre for Language and Communication Studies (Full-Time)
- Master in Science in Centre for Language and Communication Studies (Part-Time)
- Master in Letters, Centre for Language and Communication Studies (Part-Time)
- Master in Letters, Centre for Language and Communication Studies (Full-Time)

School	Research Degree Programme	Available Research Programmes
Faculty of Arts, Humanities and Social Sciences		Visit www.tcd.ie/courses/postgraduate/research/az.php
School of Psychology	Students following the School's postgraduate programme by research are engaged in research spanning the wide range of expertise in the School. Further information about the research being conducted by individual members of staff in the School is available on the School website: http://psychology.tcd.ie/research/Research-people.php	<p>September 2018 Entry</p> <ul style="list-style-type: none"> Doctor in Philosophy, Psychology (Part-Time) Doctor in Philosophy, Psychology (Full-Time) Master in Science in School of Psychology (Part-Time) Master in Science in School of Psychology (Full-Time)
	Find out more at www.tcd.ie/courses/postgraduate/research/az.php	

Confederal School of Religions, Peace Studies and Theology

The Confederal School of Religions, Peace Studies and Theology brings together three departments: the Department of Religions and Theology; the Irish School of Ecumenics (Dublin and Belfast); and the Loyola Institute. Located in the Faculty of Arts, Humanities and Social Sciences, the Confederal School engages with such diverse areas as, biblical studies, ecumenics, conflict resolution, theology, ethics, religious studies, international peace studies, reconciliation and intercultural theology as independent but related disciplinary fields. Research and scholarship are integral to the activities of each of the three academic units of the Confederal School, with different but inter-related research strengths and thematic priorities within each unit.

Find out more at www.tcd.ie/courses/postgraduate/research/az.php

September 2018 Entry

- Doctor in Philosophy, Irish School of Ecumenics (Part-Time)
- Doctor in Philosophy, Irish School of Ecumenics (Full-Time)
- Doctor in Philosophy, Loyola Institute (Full-Time)
- Doctor in Philosophy, Loyola Institute (Part-Time)
- Doctor in Philosophy, Dept. of Religions and Theology (Part-Time)
- Doctor in Philosophy, Dept. of Religions and Theology (Full-Time)
- Master in Letters, Irish School of Ecumenics (Part-Time)
- Master in Letters, Irish School of Ecumenics (Full-Time)
- Master in Letters, Loyola Institute (Full-Time)
- Master in Letters, Loyola Institute (Part-Time)
- Master in Letters in Religions and Theology (Part-Time)
- Master in Letters in Religions and Theology (Full-Time)

School	Research Degree Programme	Available Research Programmes
Faculty of Arts, Humanities and Social Sciences		Visit www.tcd.ie/courses/postgraduate/research/az.php
School of Social Sciences and Philosophy	<p>With more than 50 full-time academic members of staff and postdoctoral fellows, the School enjoys an international research profile in its constituent departments. Its postgraduate programmes consist of a combination of taught Masters degrees and Ph.D. degrees. All four Departments offer Ph.D. students a rigorous training in their respective disciplines as well as the opportunity to write original and high-quality Ph.D. theses.</p> <p>Find out more at www.tcd.ie/courses/postgraduate/research/az.php</p>	<p>September 2018 Entry</p> <ul style="list-style-type: none"> Doctor in Philosophy, Economics (Part-Time) Doctor in Philosophy, Economics (Full-Time) Doctor in Philosophy, Philosophy (Part-Time) Doctor in Philosophy, Philosophy (Full-Time) Doctor in Philosophy, Sociology (Part-Time) Doctor in Philosophy, Sociology (Full-Time) Master in Letters, Economics (Part-Time) Master in Letters, Economics (Full-Time) Master in Letters, Philosophy (Part-Time) Master in Letters, Philosophy (Full-Time) Master in Letters, Sociology (Part-Time) Master in Letters, Sociology (Full-Time)

School of Social Work and Social Policy

The School has a lively community of postgraduate research students, whether studying independently or within research centres or programmes. Some are full-time students; others combine their studies with their work.

The School has particular strengths and capacity in research supervision in the following areas: Ageing and social policy; Drug and alcohol policy and services; Child protection and welfare; Criminology and penology, Domestic violence; Family and gender; History of social policy; Immigration and Social Policy, Intellectual disability; Mental health; Social work; Sociology of reproduction..

Find out more at www.tcd.ie/courses/postgraduate/research/az.php

September 2018 Entry

- Doctor in Philosophy, Social Work and Social Policy (Part-Time)
- Doctor in Philosophy, Social Work and Social Policy (Full-Time)
- Master in Letters in School of Social Work and Social Policy (Part-Time)
- Master in Letters in School of Social Work and Social Policy (Full-Time)

School	Research Degree Programme	Available Research Programmes
Faculty of Engineering, Maths and Science		Visit www.tcd.ie/courses/postgraduate/research/az.php
School of Biochemistry and Immunology	The School of Biochemistry and Immunology has as its focus research into protein structure and function, effects of genetic polymorphism on metabolism, neuroscience, cancer biology, bioenergetics, molecular enzymology, cell and molecular biology, cellular and molecular immunology, innate immunity and inflammation, immunomodulation, infection and immunity, molecular parasitology and immunometabolism.	<p>September 2018 Entry</p> <ul style="list-style-type: none"> Doctor in Philosophy, Biochemistry (Part-Time) Doctor in Philosophy, Biochemistry (Full-Time) Doctor in Philosophy, Immunology (Part-Time) Doctor in Philosophy, Immunology (Full-Time) Master in Science, Immunology (Part-Time) Master in Science, Immunology (Full-Time)
	Find out more at www.tcd.ie/courses/postgraduate/research/az.php	

School of Chemistry

The School of Chemistry is a vibrant community of 22 academic staff members, approx. 50 postdoctoral researchers and over 100 postgraduate research students that generates an annual research income in excess of €5 million. These funds are attracted by research across the School's three core disciplines; Inorganic and Synthetic Materials Chemistry, Organic, Medicinal and Biological Chemistry and Physical, Computational and Materials Chemistry.

Please visit the web pages of research groups in the School to see what areas may be of interest to you. Following contact with your potential supervisor, if you are offered a place, you will be given a link to the admissions website through which you will need to make a formal application.

Find out more at www.tcd.ie/courses/postgraduate/research/az.php

School of Computer Science and Statistics

The School of Computer Science and Statistics has a very active Ph.D. programme, with about 200 students currently enrolled. The objective of the programme is that its Ph.D. students undertake world-class research that will have a demonstrable impact on society at large and, in so doing, to have trained the researchers and academics of the future.

Find out more at www.tcd.ie/courses/postgraduate/research/az.php

September 2018 Entry

- Doctor in Philosophy, Computer Science (Part-Time)
- Doctor in Philosophy, Computer Science (Full-Time)
- Doctor in Philosophy, Statistics (Part-Time)
- Doctor in Philosophy, Statistics (Full-Time)
- Master in Science, Computer Science (Part-Time)
- Master in Science, Computer Science (Full-Time)
- Master in Science, Statistics (Part-Time)
- Master in Science, Statistics (Full-Time)

School	Research Degree Programme	Available Research Programmes
Faculty of Engineering, Maths and Science		Visit www.tcd.ie/courses/postgraduate/research/az.php
School of Engineering	<p>The School has an international research reputation in many topics, including water engineering, structural materials, behaviour and control, digital media processing, communications engineering, energy, vibrations and acoustics, fluids, fatigue, manufacturing technology, bioengineering, transport modelling and geotechnical testing. The research-led school includes internationally renowned experts in their fields. Most of its research is funded through collaborative projects involving industry, the EU and national government programmes.</p> <p>Find out more at www.tcd.ie/courses/postgraduate/research/az.php</p>	<p>September 2018 Entry</p> <p>Doctor in Philosophy, Civil, Structural and Environmental Eng (Part-Time)</p> <p>Doctor in Philosophy, Civil, Structural and Environmental Eng (Full-Time)</p> <p>Doctor in Philosophy, Electronic and Electrical Engineering (Part-Time)</p> <p>Doctor in Philosophy, Electronic and Electrical Engineering (Full-Time)</p> <p>Doctor in Philosophy, Mechanical and Manufacturing Engineering (Part-Time)</p> <p>Doctor in Philosophy, Mechanical and Manufacturing Engineering (Full-Time)</p> <p>Engineering (M.A.I.) (Part-Time)</p> <p>Master in Science, Civil, Structural and Environmental Engineering (Part-Time)</p> <p>Master in Science, Civil Structural and Environmental Engineering (Full-Time)</p> <p>Master in Science, Electronic and Electrical Engineering (Part-Time)</p> <p>Master in Science, Electronic and Electrical Engineering (Full-Time)</p> <p>Master in Science, Mechanical and Manufacturing Engineering (Part-Time)</p> <p>Master in Science, Mechanical and Manufacturing Engineering (Full-Time)</p>
School of Genetics and Microbiology	<p>Research in Microbiology is focused on infection biology, preventive medicine, prokaryotic gene regulation, the flow of genetic information, genome composition and structure in yeasts, yeast biotechnology and virus evolution.</p> <p>Research in the Department of Genetics covers a wide variety of themes ranging from molecular control of cell death in cancer and immunity, the genetics of blindness, genome and protein evolution, brain wiring, genetic engineering of plants, gene expression in cancer, the genetic history of the Irish, and bacterial genetics.</p> <p>Find out more at www.tcd.ie/courses/postgraduate/research/az.php</p>	<p>September 2018 Entry</p> <p>Doctor in Philosophy, Genetics (Part-Time)</p> <p>Doctor in Philosophy, Genetics (Full-Time)</p> <p>Doctor in Philosophy, Microbiology (Part-Time)</p> <p>Doctor in Philosophy, Microbiology (Full-Time)</p> <p>Master in Science, Genetics (Part-Time)</p> <p>Master in Science, Genetics (Full-Time)</p> <p>Master in Science, Microbiology (Part-Time)</p> <p>Master in Science, Microbiology (Full-Time)</p>

School	Research Degree Programme	Available Research Programmes
Faculty of Engineering, Maths and Science		
School of Mathematics	<p>The School has two broad research groups in Pure Mathematics and Theoretical Physics areas. Research in the School is being funded by IRC, SFI, ERC, H2020, the Royal Society, and the Simons Foundation.</p> <p>Find out more at www.tcd.ie/courses/postgraduate/research/az.php</p>	<p>Visit www.tcd.ie/courses/postgraduate/research/az.php</p> <p>September 2018 Entry</p> <ul style="list-style-type: none"> Doctor in Philosophy, Mathematics (Part-Time) Doctor in Philosophy, Mathematics (Full-Time) Master in Science in School of Mathematics (Part-Time) Master in Science in School of Mathematics (Full-Time)
		<p>September 2018 Entry</p> <ul style="list-style-type: none"> Doctor in Philosophy, Botany (Part-Time) Doctor in Philosophy, Botany (Full-Time) Doctor in Philosophy, Geography (Part-Time) Doctor in Philosophy, Geography (Full-Time) Doctor in Philosophy, Geology (Part-Time) Doctor in Philosophy, Geology (Full-Time) Doctor in Philosophy, Zoology (Part-Time) Doctor in Philosophy, Zoology (Full-Time) Master in Science, Botany (Part-Time) Master in Science, Botany (Full-Time) Master in Science, Geology (Part-Time) Master in Science, Geology (Full-Time) Master in Letters, Geography (Part-Time) Master in Letters, Geography (Full-Time) Master in Science, Geography (Part-Time) Master in Science, Geography (Full-Time) Master in Science, Zoology (Part-Time) Master in Science, Zoology (Full-Time)
School of Natural Sciences	<p>The research Interests of staff in the School are highly diverse and span the four major themes of: Ecology and Evolution; Earth and Environmental Science; Molecular Biology and Comparative Physiology. Society, Space and Environment.</p> <p>Our research is conducted by 39 principal investigators whose activities are supported by post-doctoral and postgraduate researchers engaged in a wide range of dynamic research areas.</p> <p>Find out more at www.tcd.ie/courses/postgraduate/research/az.php</p>	<p>September 2018 Entry</p> <ul style="list-style-type: none"> Doctor in Philosophy, Botany (Part-Time) Doctor in Philosophy, Botany (Full-Time) Doctor in Philosophy, Geography (Part-Time) Doctor in Philosophy, Geography (Full-Time) Doctor in Philosophy, Geology (Part-Time) Doctor in Philosophy, Geology (Full-Time) Doctor in Philosophy, Zoology (Part-Time) Doctor in Philosophy, Zoology (Full-Time) Master in Science, Botany (Part-Time) Master in Science, Botany (Full-Time) Master in Science, Geology (Part-Time) Master in Science, Geology (Full-Time) Master in Letters, Geography (Part-Time) Master in Letters, Geography (Full-Time) Master in Science, Geography (Part-Time) Master in Science, Geography (Full-Time) Master in Science, Zoology (Part-Time) Master in Science, Zoology (Full-Time)
School of Physics	<p>The School of Physics, with 27 academic staff members, 50 postdoctoral researchers and over 100 postgraduate research students, is the largest school of physics in Ireland. The main research areas are Nanotechnology, Scientific Computing and Photonics with activities ranging from spin-electronics, to carbon nanotubes and semiconductor lasers. There are also research groups working on soft-condensed matter and astrophysics with a new section on bio-nano Physics, making the School an exciting and vibrant academic environment.</p> <p>Find out more at www.tcd.ie/courses/postgraduate/research/az.php</p>	

School	Research Degree Programme	Available Research Programmes
Faculty of Health Sciences		Visit www.tcd.ie/courses/postgraduate/research/az.php
School of Dental Science	<p>There is an active research output in all divisions: Oral Biosciences; Oral and Maxillofacial Surgery, Oral Medicine and Oral Pathology; Public and Child Dental Health; Restorative Dentistry and Periodontology. In recent years, focus has been increasingly on infections associated with HIV and AIDS patients, on fungal diseases, salivary disorders, oral cancer and biofilms – sources of infection in dental water lines, and dental implants.</p> <p>Find out more at www.tcd.ie/courses/postgraduate/research/az.php</p>	<p>September 2018 Entry</p> <p>Doctor in Philosophy in Oral Biosciences (Part-Time)</p> <p>Doctor in Philosophy in Oral Biosciences (Full-Time)</p> <p>Doctor in Philosophy in Oral Surgery, Medicine and Pathology (Part-Time)</p> <p>Doctor in Philosophy in Oral Surgery, Medicine and Pathology (Full-Time)</p> <p>Doctor in Philosophy, Public And Child Dental Health (Part-Time)</p> <p>Doctor in Philosophy, Public And Child Dental Health (Full-Time)</p> <p>Doctor in Philosophy in Restorative Dentistry and Periodontology (Part-Time)</p> <p>Doctor in Philosophy in Restorative Dentistry and Periodontology (Full-Time)</p> <p>Master in Science, Dental Science (Part-Time)</p> <p>Master in Science, Dental Science (Full-Time)</p>

School of Medicine	<p>The Graduate School continues to expand the number and range of its graduate courses. The School of Medicine is actively expanding its research activity at St. James's and Tallaght, including the establishment of the Institute for Molecular Medicine to include the John Durkan Institute for Leukaemia Research, the Dublin Molecular Medicine Centre, and the Institute of Cardiovascular Science. Its objectives include harnessing the resources available to its members to facilitate the creation of vibrant and international activity in areas such as Postgraduate Education and Training, Management and Funding of Research and Service Development and Consultancy.</p> <p>Find out more at www.tcd.ie/courses/postgraduate/research/az.php</p>	<p>September 2018 Entry</p> <p>Doctor in Medicine, Clinical Medicine</p> <p>Doctor in Philosophy, Anatomy (Part-Time)</p> <p>Doctor in Philosophy, Anatomy (Full-Time)</p> <p>Doctor in Philosophy, Clinical Microbiology (Part-Time)</p> <p>Doctor in Philosophy, Clinical Microbiology (Full-Time)</p> <p>Doctor in Philosophy, Clinical Medicine (Part-Time)</p> <p>Doctor in Philosophy, Clinical Medicine (Full-Time)</p> <p>Doctor in Philosophy, Haematology (Part-Time)</p> <p>Doctor in Philosophy, Haematology (Full-Time)</p> <p>Doctor in Philosophy, Histopathology and Morbid Anatomy (Part-Time)</p> <p>Doctor in Philosophy, Histopathology and Morbid Anatomy (Full-Time)</p> <p>Doctor in Philosophy, Health Policy and Management (Part-Time)</p> <p>Doctor in Philosophy, Health Policy and Management (Full-Time)</p> <p>Doctor in Philosophy, Medical Gerontology (Part-Time)</p> <p>Doctor in Philosophy, Medical Gerontology (Full-Time)</p> <p>Doctor in Philosophy, Immunology (Part-Time)</p> <p>Doctor in Philosophy, Immunology (Full-Time)</p> <p>Doctor in Philosophy, Obstetrics and Gynaecology (Part-Time)</p> <p>Doctor in Philosophy, Obstetrics and Gynaecology (Full-Time)</p>
--------------------	---	---

School	Research Degree Programme	Available Research Programmes
Faculty of Health Sciences		Visit www.tcd.ie/courses/postgraduate/research/az.php
School of Medicine (cont'd)	September 2018 Entry	September 2018 Entry
	Doctor in Philosophy, Occupational Therapy (Part-Time)	Master in Science, Histopathology and Morbid Anatomy (Part-Time)
	Doctor in Philosophy, Occupational Therapy (Full-Time)	Master in Science, Histopathology and Morbid Anatomy (Full-Time)
	Doctor in Philosophy, Paediatrics (Part-Time)	Master in Science, Health Policy and Management (Part-Time)
	Doctor in Philosophy, Paediatrics (Full-Time)	Master in Science, Health Policy and Management (Full-Time)
	Doctor in Philosophy, Physiology (Part-Time)	Master in Science, Medical Gerontology (Part-Time)
	Doctor in Philosophy, Physiology (Full-Time)	Master in Science, Medical Gerontology (Full-Time)
	Doctor in Philosophy, Pharmacology and Therapeutics (Part-Time)	Master in Science, Immunology (Part-Time)
	Doctor in Philosophy, Pharmacology and Therapeutics (Full-Time)	Master in Science, Immunology (Full-Time)
	Doctor in Philosophy, Psychiatry (Part-Time)	Master in Science, Obstetrics and Gynaecology (Part-Time)
	Doctor in Philosophy, Psychiatry (Full-Time)	Master in Science, Obstetrics and Gynaecology (Full-Time)
	Doctor in Philosophy, Physiotherapy (Part-Time)	Master in Science, Occupational Therapy (Part-Time)
	Doctor in Philosophy, Physiotherapy (Full-Time)	Master in Science, Occupational Therapy (Full-Time)
	Doctor in Philosophy, Public Health and Primary Care (Part-Time)	Master in Science, Paediatrics (Part-Time)
	Doctor in Philosophy, Public Health and Primary Care (Full-Time)	Master in Science, Paediatrics (Full-Time)
	Doctor in Philosophy, Radiation Therapy (Part-Time)	Master in Science, Physiology (Part-Time)
	Doctor in Philosophy, Radiation Therapy (Full-Time)	Master in Science, Physiology (Full-Time)
	Doctor in Philosophy, Surgery (Part-Time)	Master in Science, Pharmacology and Therapeutics (Part-Time)
	Doctor in Philosophy, Surgery (Full-Time)	Master in Science, Pharmacology and Therapeutics (Full-Time)
	Doctor in Philosophy, Molecular Medicine (Full-Time)	Master in Science, Psychiatry (Part-Time)
Master in Science, Anatomy (Part-Time)	Master in Science, Psychiatry (Full-Time)	
Master in Science, Anatomy (Full-Time)	Master in Science, Physiotherapy (Part-Time)	
Master in Science, Clinical Microbiology (Part-Time)	Master in Science, Physiotherapy (Full-Time)	
Master in Science, Clinical Microbiology (Full-Time)	Master in Science, Public Health and Primary Care (Part-Time)	
Master in Science, Clinical Medicine (Part-Time)	Master in Science, Public Health and Primary Care (Full-Time)	
Master in Science, Clinical Medicine (Full-Time)	Master in Science, Radiation Therapy (Part-Time)	
Master in Science, Haematology (Part-Time)	Master in Science, Radiation Therapy (Full-Time)	
Master in Science, Haematology (Full-Time)	Neuroscience	
	Surgery (M.Ch.)	

School	Research Degree Programme	Available Research Programmes
Faculty of Health Sciences Visit www.tcd.ie/courses/postgraduate/research/az.php		
<p>School of Nursing and Midwifery</p>	<p>The School has a growing record of attracting research funding in various health care areas. Research interest groups are working in collaboration with international experts in the areas of cardiovascular, oncology-palliative care, child health care, midwifery-led care, generic and intellectual disability, autism, health care management, mental illness and adult education issues. This work has created opportunities for full-time research posts.</p> <p>Find out more at www.tcd.ie/courses/postgraduate/research/az.php</p>	<p>September 2018 Entry</p> <p>Doctor in Philosophy, Nursing and Midwifery (Part-Time)</p> <p>Doctor in Philosophy, Nursing and Midwifery (Full-Time)</p> <p>Master in Science, Nursing and Midwifery (Part-Time)</p> <p>Master in Science, Nursing and Midwifery (Full-Time)</p>
<p>School of Pharmacy and Pharmaceutical Sciences</p>	<p>The School of Pharmacy and Pharmaceutical Sciences staff members are improving the lives of people through insights and discoveries that relate to medications and health. The School has gained national and international recognition for its cutting edge research and has made outstanding research contributions in a number of fields.</p> <p>Find out more at www.tcd.ie/courses/postgraduate/research/az.php</p>	<p>September 2018 Entry</p> <p>Doctor in Philosophy, Pharmacy and Pharmaceutical Sciences (Part-Time)</p> <p>Doctor in Philosophy, Pharmacy and Pharmaceutical Sciences (Full-Time)</p> <p>Master in Science in School of Pharmacy and Pharmaceutical Sciences (Part-Time)</p> <p>Master in Science in School of Pharmacy and Pharmaceutical Sciences (Full-Time)</p>



Postgraduate Taught Programmes

Course	Duration	Course Director/Coordinator	Course email	Course Tel.	Fees (€)*
Faculty of Arts, Humanities and Social Sciences					
Visit www.tcd.ie/courses/postgraduate/faculty/					
School of Business					
Digital Marketing Strategy (M.Sc)	1 Year Full Time	Prof Laurent Muzellec	business.masters@tcd.ie	+353-1-896 4299	18,663
Entrepreneurship (M.Sc.)	1 Year Full Time	Prof. Giulio Bucuni	business.masters@tcd.ie	+353-1-896 4299	18,663
Finance (M.Sc.)	1 Year Full Time	Prof. Aleksandar Sevic	business.masters@tcd.ie	+353-1-896 2629	21,763
Financial Risk Management (M.Sc.)	1 Year Full Time	Prof. Ranadeva Jayasekera	business.masters@tcd.ie	+353-1-896 2629	21,763
Human Resource Management (M.Sc.)	1 Year Full Time	Prof. Na Fu	business.masters@tcd.ie	+353-1-896 2629	18,763
International Management (M.Sc.)	1 Year Full Time	Prof. Paul Ryan	business.masters@tcd.ie	+353-1-896 2338	18,763
Management (M.Sc.)	1 Year Full Time	Prof. Padraic Regan	business.masters@tcd.ie	+353-1-896 2338	18,763
Marketing (M.Sc.)	1 Year Full Time	Prof. Sarah Browne	business.masters@tcd.ie	+353-1-896 4299	18,763
Master in Business Administration (M.B.A.)	1 Year Full Time	Prof. Michael Flynn	thetrinitymba@tcd.ie	+353-1-896 4867	34,263
Postgraduate Diploma in Accounting	8 Months Full Time	Prof. Neil Dunne	business.masters@tcd.ie	+353-1-896 4299	15,503
School of Creative Arts					
Film Studies - Theory History Practice (M.Phil.)	1 Year Full Time	Dr. Paula Quigley	pquigley@tcd.ie	+353-1-896 3512/2617	18,563
Music Composition (M.Phil.)	1 Year Full Time	Evangelia Rigaki	RIGAKIE@tcd.ie	+353-1-896 1120	14,833
Playwriting (M.F.A.)	1 Year Full Time	Loughlin Deegan	seana.skeffington@thelir.ie	+353-1-896 2559	20,203
Stage Design (M.F.A.)	1 Year Full Time	Loughlin Deegan	seana.skeffington@thelir.ie	+353-1-896 2559	20,203
Theatre Directing (M.F.A.)	1 Year Full Time	Loughlin Deegan	seana.skeffington@thelir.ie	+353-1-896 2559	20,203
Theatre and Performance (M.Phil.)	1 Year Full Time	Dr. Nicholas Johnson	johnson@tcd.ie	+353-1-896 2295/ 1715	14,778
School of Education					
Master in Education (M.Ed.)	1 Year Full Time	Dr Erika Piazzoli /Dr Noel Ó Murchadha	master.education@tcd.ie	+353-1-896 3568 / 1290	12,023
Professional Masters Education (P.M.E.)	2 Years Full Time	Ms Melanie Ni Dhuinn	pme.admin@tcd.ie	+353-1-896 1488	10,018
School of English					
Childrens Literature (M.Phil. / P.Grad.Dip.)	1 Year Full Time	Dr Jane Carroll, Dr Pádraic Whyte	jane.carroll@tcd.ie	+353-1-896 1934/1224	16,163
Creative Writing (M.Phil.)	1 Year Full Time	Prof. Deirdre Madden	wilde@tcd.ie	+353-1-896 2885	16,163
Digital Humanities and Culture (M.Phil.)	1 Year Full Time	Prof. Mark Sweetnam	mark.sweetnam@tcd.ie	+353-1-896 1111	16,888
Irish Writing (M.Phil. / P.Grad.Dip.)	1 Year Full Time	Prof. Eve Patten	epatten@tcd.ie	+353-1-896 2285	16,163
Literatures of the Americas (M.Phil.)	1 Year Full Time	Dr. Melanie Otto	ottom@tcd.ie	+353-1-896 1355	16,163
Popular Literature (M.Phil.)	1 Year Full Time		murphb12@tcd.ie	+353 1 896 1111	16,163

***Please Note:** Fees listed are annual, full time fees unless otherwise stated. New students must pay fees in full in advance of registration. Regulations relating to the payment of fees are set out in the College Calendar and can be viewed at: www.tcd.ie/calendar/. Fees include Tuition, Sports Centre Charge, USI Levy and Commencement Fee (Commencement Fee is payable in Year 1 only). A detailed listing of fees is available at <http://www.tcd.ie/academicregistry/fees-payments/course-fees/> N.B. The Board of Trinity College, Dublin, is not bound by any error in, or omission from, the above information.

Course	Duration	Course Director/Coordinator	Course email	Course Tel.	Fees (€)*
Faculty of Arts, Humanities and Social Sciences					
Visit www.tcd.ie/courses/postgraduate/faculty					
School of Histories and Humanities					
Art History (M.Phil. / P.Grad.Dip.)	1 Year Full Time	Dr. Laura Cleaver	cleaverl@tcd.ie, arthist@tcd.ie	+353-1-896 1995	14,268
Classics (M.Phil. / P.Grad.Dip.)	1 Year Full Time	Dr. Shane Wallace	swallace@tcd.ie	+353-1-671 0862	14,268
Early Modern History (M.Phil. / P.Grad.Dip.)	1 Year Full Time	Dr. Joseph Clarke	clarkej1@tcd.ie	+ 353-1-896 1791	14,268
Gender and Women's Studies (M.Phil. / P.Grad.Dip.)	1 Year Full Time	Dr. Catherine Lawless	lawlessc@tcd.ie	+353-1-896 3997	14,268
International History (M.Phil. / P.Grad.Dip.)	1 Year Full Time	Molly Pucci	puccim@tcd.ie	+ 353-1-896 1791	15,408
Medieval History (M.Phil. / P.Grad.Dip.)	1 Year Full Time	Dr Immo Warntjes	iwarntje@tcd.ie	+ 353-1-896 1791	14,268
Modern Irish History (M.Phil. / P.Grad.Dip.)	1 Year Full Time	Dr Carole Holohan	holohaca@tcd.ie	+ 353-1-896 1791	16,163
Public History and Cultural Heritage (M.Phil. / P.Grad.Dip.)	1 Year Full Time	Dr Georgina Laragy	laragy@tcd.ie	+ 353-1-896 1791	16,163
School of Languages, Literatures and Cultural Studies					
Comparative Literature (M.Phil.)	1 Year Full Time		arndsp@tcd.ie	+353-1-896 1706/1894	14,778
European Studies (M.Phil.)	1 Year Full Time	Dr. Balázs Apor	aporb@tcd.ie	+353-1-896 1706/1894	14,778
Literary Translation (M.Phil.)	1 Year Full Time		translat@tcd.ie	+353-1-896 1706/1894	14,778
Medieval Language Literature and Culture (M.Phil.)	1 Year Full Time	Dr Brendan O'Connell	oconnob2@tcd.ie	+353-1-896 1706/1894	14,778
Early Irish (M.Phil.)	1 Year Full Time	Damian McManus	pmcmanus@tcd.ie	+353-1-896 1105	11,803
Old Irish (P.Grad.Dip.)	1 Year Full Time	Damian McManus	pmcmanus@tcd.ie	+353-1-896 1105	11,803
Textual and Visual Studies (M.Phil.)	1 Year Full Time	Dr Justin Doherty	jdoherly@tcd.ie	+353-1-896 1706/1894	14,778
School of Law					
Intellectual Property and Information Technology Law (LL.M.)	1 Year Full Time	Prof. Gerry Whyte	law.postgraduate@tcd.ie	+353-1-679 2392	19,308
International and Comparative Law (LL.M.)	1 Year Full Time	Prof. Gerry Whyte	law.postgraduate@tcd.ie	+353-1-679 2392	19,308
International and European Business Law (LL.M.)	1 Year Full Time	Prof. Gerry Whyte	law.postgraduate@tcd.ie	+353-1-679 2392	19,308
Laws (LL.M.)	1 Year Full Time	Prof. Gerry Whyte	law.postgraduate@tcd.ie	+353-1-679 2392	19,308

***Please Note:** Fees listed are annual, full time fees unless otherwise stated. New students must pay fees in full in advance of registration. Regulations relating to the payment of fees are set out in the College Calendar and can be viewed at: www.tcd.ie/calendar/. Fees include Tuition, Sports Centre Charge, USI Levy and Commencement Fee (Commencement Fee is payable in Year 1 only). A detailed listing of fees is available at <http://www.tcd.ie/academicregistry/fees-payments/course-fees/>. N.B. The Board of Trinity College, Dublin, is not bound by any error in, or omission from, the above information.

Course	Duration	Course Director/Coordinator	Course email	Course Tel.	Fees (€)*
Faculty of Arts, Humanities and Social Sciences					
Visit www.tcd.ie/courses/postgraduate/faculty					
School of Linguistic, Speech and Communication Sciences					
Applied Linguistics (M.Phil. / P.Grad.Dip.)	1 Year Full Time	Dr Gessica De Angellis	gessica.deangellis@tcd.ie	+353-1-896 1106	18,563
Chinese Studies (M.Phil. / P.Grad.Dip.)	1 Year Full Time	Dr Adrian Tien	tiena@tcd.ie	+353-1-896 4035	18,763
Clinical Speech and Language Studies (Dysphagia) (P.Grad.Dip.)	1 Year Part Time	Dr Margaret Walshe	cslspostgraduate@tcd.ie	+353-1-896 1496	10,613
Clinical Speech and Language Studies (M.Sc.)	1 Year Full Time	Dr Margaret Walshe	cslspostgraduate@tcd.ie	+353-1-896 1496	18,563
English Language Teaching (M.Phil. / P.Grad.Dip.)	1 Year Full Time	Dr Gessica De Angellis	gessica.deangellis@tcd.ie	+353-1-896 1106	18,563
Linguistics (M.Phil. / P.Grad.Dip.)	1 Year Full Time	Dr Gessica De Angellis	gessica.deangellis@tcd.ie	+353-1-896 1106	18,563
Speech and Language Processing (M.Phil. / P.Grad.Dip.)	1 Year Full Time	Dr Gessica De Angellis	gessica.deangellis@tcd.ie	+353-1-896 1106	18,563
School of Psychology					
Applied Behaviour Analysis (M.Sc.)	2 Years Full Time	Asst. Prof. Olive Healy (Year 1), Asst. Prof. Maeve Bracken (Year 2)	m.sc.aba@tcd.ie	+353-1-896 2290	14,668
Applied Psychology (M.Sc.)	1 Year Full Time	Dr. Tim Trimble	amduffy@tcd.ie	+353-1-896 2290	19,873
Clinical Psychology (D.Clin.Psych.)	3 Year Full Time	Prof. Kevin Tierney	amatthew@tcd.ie	+353 1 8962425	18,643
Counselling Psychology (D.Couns.Psych.)	3 Year Full Time	Dr. Ladislav Timulak	camcnall@tcd.ie	+353 1 896 2431	19,318
Psychoanalytic Studies (M.Phil. / P.Grad.Dip.)	1 Year Full Time	Dr. John O'Connor	psychoanalysis@tcd.ie	+353-1-896 3907	18,563
Psychology (H.Dip.) - Psychology Conversion Course	2 Years Full Time	Dr. Jean Quigley	psychconv@tcd.ie	+353-1-896 2290	18,583
School of Religions, Peace Studies and Theology					
Christian Theology (M.Phil. / P.Grad.Dip.)	1 Year Full Time	Prof. Fainche Ryan	loyolainstitute@tcd.ie	+353-1-8964790	16,163
Conflict Resolution and Reconciliation (M.Phil. / P.Grad.Dip.)	1 Year Full Time	Prof. Brendan Browne	reconsec@tcd.ie	+44-28-9077 0087	16,163
Divinity (B.D.)	Awarded on Exam and Thesis	Ms Jane Welch	jwelch@tcd.ie	+353-1-896 1297	1,743
Intercultural Theology and Interreligious Studies (M.Phil. / P.Grad.Dip.)	1 Year Full Time	Prof. Jude Lal Fernando	ecumsec@tcd.ie	+353-1-8964771	16,163
International Peace Studies (M.Phil. (Peace Studies) / P.Grad.Dip.)	1 Year Full Time	Prof. Etain Tannam	peacesec@tcd.ie	+353-1-8964772	16,163

***Please Note:** Fees listed are annual, full time fees unless otherwise stated. New students must pay fees in full in advance of registration. Regulations relating to the payment of fees are set out in the College Calendar and can be viewed at: www.tcd.ie/calendar/. Fees include Tuition, Sports Centre Charge, USI Levy and Commencement Fee (Commencement Fee is payable in Year 1 only). A detailed listing of fees is available at <http://www.tcd.ie/academicregistry/fees-payments/course-fees/>. N.B. The Board of Trinity College, Dublin, is not bound by any error in, or omission from, the above information.

Course	Duration	Course Director/Coordinator	Course email	Course Tel.	Fees (€)*
Faculty of Arts, Humanities and Social Sciences					
Visit www.tcd.ie/courses/postgraduate/faculty					
School of Social Sciences and Philosophy					
Comparative Social Change	1 Year Full Time	Prof. Daniel Faas, Prof. Camilla Devitt	sociology@tcd.ie	+353-1-896 2701	
Economics (M.Sc. / P.Grad.Dip.)	1 Year Full Time	Prof. Fadi Hassan	economics@tcd.ie	+353-1-896 1325	17,868
International Politics (M.Sc. / P.Grad.Dip.)	1 Year Full Time	Dr. Jesse Dillon-Savage	polgrad@tcd.ie	+353-1-896 3483	19,953
Philosophy	1 Year Full Time	Prof. Paul O'Grady, Prof. James Miller	philosophy@tcd.ie	+353-1-896 1529	14,863
Race, Ethnicity, Conflict (M.Phil.)	1 Year Full Time	Prof. David Landy	mphilrec@tcd.ie	+ 353-1-896 2701	16,163
School of Social Work and Social Policy					
Applied Social Research (M.Sc.)	1 Year Full Time	Dr. Paula Mayock	pmayock@tcd.ie	+353-1-896 3593	22,348
Social Policy and Practice (Online) (P. Grad. Dip.)	1 Year Online	Dr. Julie Byrne	obrie.l10@tcd.ie	+353-1-896 4648	11,618
Social Work (M.S.W.)	2 Years Full Time	Asst Prof. Gloria Kirwan	master.socialwork@tcd.ie	+353-1-896 4579	18,563

***Please Note:** Fees listed are annual, full time fees unless otherwise stated. New students must pay fees in full in advance of registration. Regulations relating to the payment of fees are set out in the College Calendar and can be viewed at: www.tcd.ie/calendar/. Fees include Tuition, Sports Centre Charge, USI Levy and Commencement Fee (Commencement Fee is payable in Year 1 only). A detailed listing of fees is available at <http://www.tcd.ie/academicregistry/fees-payments/course-fees/>. N.B. The Board of Trinity College, Dublin, is not bound by any error in, or omission from, the above information.

Course	Duration	Course Director/Coordinator	Course email	Course Tel.	Fees (€)*
Faculty of Engineering, Mathematics and Science					
Visit www.tcd.ie/courses/postgraduate/faculty					
School of Biochemistry and Immunology					
Immunology (M.Sc.)	1 Year Full Time	Prof. Cliona O'Farrelly and Dr. Nigel Stevenson	MSc.Immunology@TCD.ie	+353-1-896 4195/1851	
School of Computer Science and Statistics					
Computer Science - Data Science	1 Year Full Time	Prof. Donal O'Mahony	postgraduate@scss.tcd.ie	+353-1-896 3692	22,838
Computer Science - Future Networked Systems	1 Year Full Time	Prof. Donal O'Mahony	postgraduate@scss.tcd.ie	+353-1-896 3692	22,838
Computer Science - Graphics and Vision Technologies	1 Year Full Time	Prof. Donal O'Mahony	postgraduate@scss.tcd.ie	+353-1-896 3692	22,838
Computer Science - Intelligent Systems	1 Year Full Time	Prof. Donal O'Mahony	postgraduate@scss.tcd.ie	+353-1-896 3692	22,838
Interactive Digital Media (M.Sc.)	1 Year Full Time	Asst Prof. Mads Haahr	postgraduate@scss.tcd.ie	+353-1-896 1765	22,838
Statistics (P. Grad. Cert.)	1 Year Part Time	Dr Myra O'Regan	postgraduate@scss.tcd.ie	+353-1-896 1765	8,242
School of Engineering					
Bioengineering (M.Sc. / P.Grad.Dip.)	1 Year Full Time	Prof Conor Buckley	bioengmsc@tcd.ie	+353-1-896 3393	22,838
Electronic Information Engineering (M.Sc.)	1 Year Full Time	Prof. Anil Kokaram	anil.kokaram@tcd.ie, kirkwooj@tcd.ie	+353-1-896 2508	22,838
Energy Science (M.Sc. / P.Grad.Dip)	1 Year Full Time	Asst Prof. Stephen Dooley	energyscience@tcd.ie	+353 1896 2030	26,000
Environmental Engineering (M.Sc.)	1 Year Full Time	Asst Prof Liwen Xiao	lxiao@tcd.ie	+353-1-896 1457	22,838
Structural and Geotechnical Engineering (M.Sc.)	1 Year Full Time	Asst Prof Liwen Xiao	lxiao@tcd.ie	+353-1-896 1457	22,838
Transport Engineering, Policy & Planning (M.Sc.)	1 Year Full Time	Asst Prof Liwen Xiao	lxiao@tcd.ie	+353-1-896 1457	22,838
Sustainable Energy (M.Sc.)	1 Year Full Time	Asst Prof Liwen Xiao	lxiao@tcd.ie	+353-1-896 1457	22,838
Engineering (by Module) (M.Sc.)	1 Year Full Time	Prof. David Taylor	dtaylor@tcd.ie, anil.kokaram@tcd.ie	+353-1-896 1703/ 1383/2900	22,838
Music and Media Technologies (M.Phil.)	1 Year Full Time		kirkwooj@tcd.ie	+353-1-896 1142	22,838
Physical Planning (P.Grad.Dip.)	1 Year Full Time		Deborah.Walsh@tcd.ie	+353-1-896 1142	15,376

***Please Note:** Fees listed are annual, full time fees unless otherwise stated. New students must pay fees in full in advance of registration. Regulations relating to the payment of fees are set out in the College Calendar and can be viewed at: www.tcd.ie/calendar/. Fees include Tuition, Sports Centre Charge, USI Levy and Commencement Fee (Commencement Fee is payable in Year 1 only). A detailed listing of fees is available at <http://www.tcd.ie/academicregistry/fees-payments/course-fees/> N.B. The Board of Trinity College, Dublin, is not bound by any error in, or omission from, the above information.

Course	Duration	Course Director/Coordinator	Course email	Course Tel.	Fees (€)*
Faculty of Engineering, Mathematics and Science					
Visit www.tcd.ie/courses/postgraduate/faculty					

School of Mathematics

High Performance Computing (M.Sc. / P.Grad.Dip.)	1 Year Full Time	Prof. Michael Peardon	mjp@maths.tcd.ie		18,776
--	------------------	-----------------------	------------------	--	--------

School of Natural Sciences

Biodiversity and Conservation (M.Sc. / P.Grad.Dip.)	1 Year Full Time		swaldren@tcd.ie	+353-1-896 4218	16,418
Development Practice (M.Sc. /P.Grad.Dip.)	2 Years Full Time	Dr Susan Murphy	mdpdpdub@tcd.ie	+353-1-896 2414	22,838
Environmental Sciences (M.Sc. / P.Grad.Dip.)	1 Year Full Time	Dr. Quentin Crowley	crowleyq@tcd.ie	+353-1-896 4203	16,418

***Please Note:** Fees listed are annual, full time fees unless otherwise stated. New students must pay fees in full in advance of registration. Regulations relating to the payment of fees are set out in the College Calendar and can be viewed at: www.tcd.ie/calendar/. Fees include Tuition, Sports Centre Charge, USI Levy and Commencement Fee (Commencement Fee is payable in Year 1 only). A detailed listing of fees is available at <http://www.tcd.ie/academicregistry/fees-payments/course-fees/>. N.B. The Board of Trinity College, Dublin, is not bound by any error in, or omission from, the above information.

Course	Duration	Course Director/Coordinator	Course email	Course Tel.	Fees (€) *
Faculty of Health Sciences					
Visit www.tcd.ie/courses/postgraduate/faculty					
School of Dental Science					
Clinical Dentistry (M.Sc.)	30ECTS	Dr. Michael O'Sullivan	catherine.creagh@dental.tcd.ie	+353-1-612 7354	10,843
Dental Surgery (D.Ch.Dent.)	3 Year Full Time/5 Year Part Time		catherine.creagh@dental.tcd.ie	+353-1-612 7354	48,453
School of Medicine					
Biomedical Sciences (Intercalated) (M.Sc. / P.Grad.Dip.)	1 Year Full Time	Dr. Henry Windle	gradapps.hs@tcd.ie, hjwindle@tcd.ie, vilap@tcd.ie	+353-1-896 2211/ 4924	18,228
Global Health (M.Sc.)	1 Year Full Time		global.health@tcd.ie	+353-1-896 3556	19,758
Healthcare Infection Management (M.Sc.)	1 Year Full Time	Dr. Julie Renwick	renwickj@tcd.ie	+353-1-896 4551	18,228
Master in Medicine (M.M. / P.Grad.Dip)	1 Year Full Time	Prof. Martina Hennessy	teelingm@tcd.ie	+353-1-410 3671 / 896 1568	16,000
Medicine (P.Grad.Dip)	1 Year Full Time	Prof. Mary Teeling	teelingm@tcd.ie	+353-1-410 3671 / 896 1568	14,903
Molecular Medicine (M.Sc.)	1 Year Full Time	Dr Ross McManus, Dr Henry Windle, Dr Yuri Volkov, , Dr Anne-Marie Byrne and Dr Shigeki Nakagome	galikm@tcd.ie	+353-1-896 3157/ 2139	18,228
Molecular Medicine (P.Grad.Dip)	1 Year Full Time	Ross McManus	molec.med@tcd.ie	+353-1-896 3556	11,978
Neuroscience (M.Sc.)	1 Year Full Time	Prof. Kumlesh K Dev	gradapps.hs@tcd.ie	+353-1-8964826	21,948
Sports and Exercise Medicine (M.Sc.)	1 Year Full Time		gradapps.hs@tcd.ie	+353-1-896 3556	24,303
Translational Oncology (M.Sc.)	1 Year Full Time	Prof. Jacintha O'Sullivan	msconcol@tcd.ie	+353-1-896 3556	18,848

***Please Note:** Fees listed are annual, full time fees unless otherwise stated. New students must pay fees in full in advance of registration. Regulations relating to the payment of fees are set out in the College Calendar and can be viewed at: www.tcd.ie/calendar/. Fees include Tuition, Sports Centre Charge, USI Levy and Commencement Fee (Commencement Fee is payable in Year 1 only). A detailed listing of fees is available at <http://www.tcd.ie/academicregistry/fees-payments/course-fees/> N.B. The Board of Trinity College, Dublin, is not bound by any error in, or omission from, the above information.

Course	Duration	Course Director/Coordinator	Course email	Course Tel.	Fees (€) *
Faculty of Health Sciences					
Visit www.tcd.ie/courses/postgraduate/faculty					

School of Nursing and Midwifery

Childrens Nursing (H.Dip.)	1 Year Full Time	Frances Ryan	whelanj1@tcd.ie	+353-1-896-2692	20,378
Community Health (M.Sc. / P.Grad.Dip.)	1 Year Full Time	Catherine Tracey	traceyca@tcd.ie	+353-1-896 2820	20,338
Dementia (M.Sc. / P.Grad.Dip.)	1 Year Full Time	Dr Michael Brennan	brennami@tcd.ie	+353-1-896 3021/3950	20,338
Mental Health (M.Sc. / P.Grad.Dip.)	1 Year Full Time	Dr Michael Brennan	brennami@tcd.ie	+353-1-896 3021/3950	20,338
Mental Health (M.Sc. / P.Grad.Dip.) - Child, Adolescent and Family Strand	1 Year Full Time	Dr Michael Brennan	brennami@tcd.ie	+353-1-896 3021/3950	20,338
Mental Health (M.Sc. / P.Grad.Dip.) Psychosocial Interventions	1 Year Full Time	Dr Michael Brennan	brennami@tcd.ie	+353-1-896 3021/3950	20,338
Midwifery (H.Dip.)	18 Months Full Time	Denise Lawler	midwifery.info@tcd.ie	+353-1-896-2692	18,117
Midwifery (M.Sc. / P.Grad.Dip)	1 Year Full Time	Caitriona Nic Philibin	c.nicphilibin@tcd.ie	+353-1-896 2691	20,338
Nursing (M.Sc.)	1 Year Full Time	Caitriona Nic Philibin	c.nicphilibin@tcd.ie	+353-1-896 2691	20,338

School of Pharmacy & Pharmaceutical Sciences

Pharmaceutical Sciences (M.Sc. / P.Grad. Dip.)	1 Year Full Time	Assoc. Prof. Lidia Tajber	lidia.tajber@tcd.ie	+353-1-896 2787	18,638
--	------------------	---------------------------	---------------------	-----------------	--------

***Please Note:** Fees listed are annual, full time fees unless otherwise stated. New students must pay fees in full in advance of registration. Regulations relating to the payment of fees are set out in the College Calendar and can be viewed at: www.tcd.ie/calendar/. Fees include Tuition, Sports Centre Charge, USI Levy and Commencement Fee (Commencement Fee is payable in Year 1 only). A detailed listing of fees is available at <http://www.tcd.ie/academicregistry/fees-payments/course-fees/>. N.B. The Board of Trinity College, Dublin, is not bound by any error in, or omission from, the above information.

Trinity College Dublin, the University of Dublin

College Green, Dublin 2, Ireland

T +353 (0)1 896 4500

www.tcd.ie/study



Trinity College Dublin

Coláiste na Tríonóide, Baile Átha Cliath

The University of Dublin